



JUDA MACHINERY BANGDA SHOE-MAKING MACHINERY

2016 Product
Catalogue

炬达机械 & 邦达鞋机

浙江炬达机械有限公司

地 址：浙江温州市瓯海区瞿溪南片新工业区万超路1号
电 话：0577-86283388 86282388 86281334 (售后)
传 真：0577-86283678
网 址：www.bangda.com
邮 箱：bangda@cnbd.cn

温州邦达鞋机制造有限公司

地 址：浙江温州市高新经济开发区科技园兴平路68号
电 话：0577-86282818
传 真：0577-86282808

温州邦达贸易有限公司

地 址：温州市瓯海区瞿溪南片新工业区万超路1号
电 话：0577-86277828
传 真：0577-86283678

ZHEJIANG JUDA MACHINERY CO., LTD.

Add: No 1, Wanchao Road, South Section Industrial Zone, Quxi, Ouhai, Wenzhou
Tel: 0577-86283388 86282388 86281334 (After-sales)
Fax: 0577-86283678
Http: //www.bangda.com
E-mail: bangda@cnbd.cn

WENZHOU BANGDA SHOE-MAKING MACHINERY CO., LTD.

Add: No. 68, Xinping Road, Longwan, Wenzhou, Zhejiang, P.R.C.
Tel: 0577-86282818
Fax: 0577-86282808

WENZHOU BANGDA TRADE CO., LTD.

Add: No 1, Wanchao Road, South Section Industrial Zone, Quxi, Ouhai, Wenzhou
Tel: 0577-86277828
Fax: 0577-86283678



我们一直致力于 全力打造中国鞋机行业领先品牌

We've working on to build leading brand in the china shoe-making machinery industry.

主营产品 ► MAIN BUSINESS PRODUCTS

带刀片皮机系列

全自动单面、双面钉鞋眼机，半自动单面、双面钉鞋眼机，自动钉虎钩扣机，自动钉登山扣机，

自动上胶折边机，自动上胶锤平机，自动上胶压条机、包条机系列，

中底成套设备（成型机、修边机、贴合机、铣槽机、削薄机、铆钉机等系列），

智能圆刀削皮机，智能皮革螺旋切条机，

全自动单头、双色、三合一钉珠机系列，

全自动钉四合扣、五爪扣、衣角钉、撞钉等铆合机系列，

全自动排版钉四爪扣机，

等50多款机型。

JUODA
BARNGDA



企业简介 ▼ COMPANY BRIEF INTRODUCTION

浙江炬达机械有限公司，前身温州邦达鞋机制造有限公司，位于全国最大的鞋业鞋机生产基地浙江温州，是一家集开发、生产、销售为一体的专业制鞋设备企业。公司成立于1990年，经过20多年的发展，不断追求进步、持续创新，始终坚持“诚信为本，质量至上”的经营理念，为客户提供最好的产品，更优的服务，已成为鞋机行业界知名的代表企业之一。

本公司技术实力雄厚，拥有一支优秀技术人员组成的高级研发团队，还有一批丰富经验的市场营销精英和企业管理智囊团队。现公司拥有激光切割机、立式加工中心、卧式加工中心、数控机床、镗床等160多台加工设备。精密的加工设备、精湛的加工工艺、健全的检测体系和管理团队，已形成一套严谨的科学技术体系和现代管理体系，2009年度智能折边机被市科学技术局列为科技项目，授予市级科技计划项目“技术创新奖”。

主要产品有：片皮机系列、折边机系列、气眼机系列、钉扣机系列、铆钉机系列、中底成套设备、上胶机系列、修边机系列等多种系列，50多款机型。产品广泛应用于制鞋、箱包、皮具、包装等行业，公司先后在国内各个地方设立50多个经商网点和售后服务站，同时产品远销至欧洲、南美洲、非洲、中东、东南亚等世界各地。

公司在2000年一次性通过ISO9001：2000国际质量体系认证，“炬达”牌系列产品被中国品牌质量管理评价中心、中国中小企业名牌培育工作委员会授予“中国名优品牌”；“邦达”牌制鞋设备已荣获40多项国家专利，制动钉鞋眼机还被“全国皮革制鞋机械标准化中心”定为国家行业标准的唯一起草单位，2008-2009年度公司在北京·钓鱼台国宾馆接受网络&中国制鞋行业“十佳鞋机企业”荣誉称号，2009年度温州市鞋革行业协会、温州市商报授予首届鞋业金牌鞋机供应商，2011年，公司被推选为温州市鞋机商会会长单位，引领鞋机行业向前发展。

公司秉承“更精、更优、更好”的产品理念，依靠优异的品质、卓越的性能、良好的售后服务，获得广大客户的认可和一致好评，以客户需求为目标，制造满意的炬达产品，一如既往的为大家提供最完善的售前、售中、售后服务。诚挚欢迎海内外新老客户光临本公司洽谈业务，加强合作！

Zhejiang JUDA Machinery co.,Ltd ---WenZhou BANGDA shoe-making machinery Co.,Ltd. is located in the biggest shoes industry and shoe-making machinery manufacturing base-China Shoes Capital---Wenzhou city of Zhejiang province. We are a specialized company that engages in developing , manufacturing and selling of shoe-making machines. Our company was established in 1990. In the more than 20 years of development, we insist on the “Integrity-based,Quality is the first” business philosophy. And we constantly seek to progress, and continuous innovation. Provide the best products and the better service for the customers. Now we are the one of the famous companies in shoe-making industry.

We are rich in technology and own a large number of senior researchers and elites who have abundant experience in marketing and business management. Now we have more than 160 precision processing equipments. Like Fiber laser cutter, Vertical processing center, Horizontal processing center, Computer numerical control machine tools, Boring machine. Precision processing equipments, exquisite processing technology, sound detection system and excellent management team, we have a strict scientific technology system and the modern management system. The intelligent folding machine is listed as the technological project by municipal science and technology bureau in year 2009, and awarded the reward of technological innovation of municipal technical planning projects.

Our main products as follows: Band-knife splitting machine, Folding machines, Eyeleting machines, Button nailing machines, Riveting machines, whole sets of Insole machines, Cementing machines, Edge trimming machines. More than 50 types of machines. The machines are widely used in shoe industry ,bag industry, leather ware and package industry, till now we have set up more than 50 agents and after sales spots in the places around the country, meanwhile our products are exported to Europe, South America, Africa, middle east, south east of Asia and etc.

Our company has awarded ISO9001:2000 international quality system certificate in 2000. The “JUDA” brand is awarded the “Chinese famous brand” by China brand quality management evaluation center. The “BANGDA” branded products have got more than 40 patents, because of the invention of the automatic eyeleting machines, our company has been chosen by the “Chinese leather shoe making machinery standard center” as the only drafting unit of the national industry standard.

In the year of 2008-2009, our company is awarded as the top ten shoe machinery companies in Diaoyutai hotel of Beijing. In year of 2009, our company is awarded as the golden medal shoe machinery suppliers by Wenzhou tanning industry association and Wenzhou commercial newspaper .

In year of 2011 , our company is selected as the presidential unit of Wenzhou shoe machinery commercial association to lead the way of industrial development.

Our company has been adhering to the product ideal of “ more accurate , higher-quality , better” , resort to the excellent quality, supreme performance , great service after sale , is well received by our customers. Taking the customers' demands as the target , we are making the satisfying products and provide the perfect service of before sale, during sale and after sale. Sincerely welcome the customers from inside country or abroad to negotiate and cooperate with us.



企业形象 ▼
ENTERPRISE
IMAGE



炬达机械全面导入VI视觉系统，以良好而富有规划性的视觉传达，为展示现代企业风采和开拓市场奠定了坚实的基础。

JUDA machinery introduces VI visual system completely, which as to show the modern enterprise's graceful feature and lay a firm foundation for opening up the market by a good visual communication.



制造中心 ▼
MANUFACTURING
CENTER



一丝不苟 追求卓越品质
CONSCIENTIOUS AND METICULOUS
SPIRIT CONSTANTLY PURSUING
EXCELLENT QUALITY

先进的设备，是现代企业发展必须具备的先决条件，硬件过硬，才能使高科技含量，高品质的产品源源不断的生产。拥有一批高，精尖一流水准的机械设备拥有自己的精良装备及工装设计队伍和高水平的制造人员，奠定了打造国际化制造基地的基础。

Advanced equipment is the developing precondition of a modern enterprise. A good hardware can produce the product with advanced technology and high quality for a longtime. A high and exact mechanical equipment, a well-built design team and a high eligible producing team, which is the foundation of the international manufacture base.

目录▼
CATALOGUE

BD-L620W	带刀片皮机	PLC BAND KNIFE SPLITTING MACHINE -----	10/11
BD-L520W	带刀片皮机	PLC BAND KNIFE SPLITTING MACHINE -----	12
BD-L420W	带刀片皮机	PLC BAND KNIFE SPLITTING MACHINE -----	13
BD-420W	带刀片皮机	PLC BAND KNIFE SPLITTING MACHINE -----	14
BD-400A	带刀片皮机	PLC BAND KNIFE SPLITTING MACHINE -----	15
JD-300	带刀片皮机	PLC BAND KNIFE SPLITTING MACHINE -----	16
JD-266	电脑选位圆刀削皮机	COMPUTERIZED LOCALIZATION SKIVING MACHINE -----	17
JD-298A	电脑智能折边机	COMPUTERIZED INTELLIGENCE FOLDING MACHINE -----	18
JD-293A	自动变速上胶折边机	AUTOMATIC SPEED CHANGE CEMENTING & FOLDING MACHINE -----	19
JD-292A	自动变速上胶折边机	AUTOMATIC SPEED CHANGE CEMENTING & FOLDING MACHINE -----	20
JD-292	自动变速上胶折边机	AUTOMATIC SPEED CHANGE CEMENTING & FOLDING MACHINE -----	21
BD-291A	自动上胶折边机	COMPUTERIZED HOT-CEMENT FOLDING MACHINE -----	22
BD-291	自动上胶折边机	COMPUTERIZED HOT-CEMENT FOLDING MACHINE -----	23
JD-295A	自动上胶分边锤平机	AUTOMATIC CEMENTING, SEPARATING SIDES & POUNDING MACHINE -----	24
JD-226	自动上胶压条机	AUTOMATIC CEMENTING & LAYERING MACHINE -----	25
BD-296A	自动上胶包条机	AUTOMATIC HOT-CEMENT COVERING MACHINE -----	26
BD-296B	自动上胶包拉链机	AUTOMATIC CEMENTING AND COVERING ZIPPER MACHINE -----	27
BD-202	中底包边机	UPPER FOLDING MACHINE/INSOLE BINDING MACHINE -----	28
BD-208A	鞋底·内里修边机	SOLE & LINING TRIMMING MACHINE -----	29
BD-104	皮革螺旋切条机	LEATHER SPIRE CUTTING LINE MACHINE -----	30
JD-98	全自动冲孔钉气眼机	AUTOMATIC PUNCHING & EYELETTING MACHINE -----	31
BD-3A	自动气眼机	AUTOMATIC EYELETTING MACHINE -----	32
BD-95	自动双面钉（鞋）眼机	AUTOMATIC DOUBLE-SIDE EYELETTING MACHINE -----	33
BD-11	铆钉机、钉眼机	RIVETING MACHINE/EYELETTING MACHINE -----	34
BD-108	双面（和合）鞋眼机	AUTOMATIC DOUBLE-SIDE EYELETTING MACHINE -----	35
BD-17	纽扣铆合机	FASTENER RIVETING MACHINE -----	36
BD-107	双面铆钉铆合机	DOUBLE-SIDE RIVETING MACHINE -----	37

www.bangda.com

BD-11B	半自动（多用型）钉扣机	SEMI-AUTOMATIC (MULTI-FUNCTION) BUTTON RIVETING MACHINE -----	38
BD-18	桌上型铆钉机	TABLE TYPE RIVETING MACHINE -----	39
BD-30	自动冲孔机	AUTOMATIC PUNCHING MACHINE -----	40
JD-10	电脑直驱打钮机	COMPUTER DIRECT-DRIVEN BUTTON RIVETING MACHINE -----	41
JD-907	自动钉虎钩扣机	AUTOMATIC HOOK BUTTON FASTENING MACHINE -----	42
JD-917	自动钉虎钩扣机	AUTOMATIC HOOK BUTTON FASTENING MACHINE -----	43
JD-908	自动登山扣机	AUTOMATIC MOUNTAINEERING BUTTON FASTENING MACHINE -----	44
JD-918	自动登山扣机	AUTOMATIC MOUNTAINEERING BUTTON FASTENING MACHINE -----	45
BD-100	双头钉眼机	TWIN-HEAD EYELETTING MACHINE -----	46
JD-136C	全自动钉珠机	AUTOMATIC PEARL & NAIL RIVETING MACHINE -----	47
JD-136D	全自动双色钉珠机	AUTOMATIC DOUBLE-COLOUR PEARL & NAIL RIVETING MACHINE -----	48
JD-136S	全自动多功能钉珠机	AUTOMATIC MULTI-FUNCTION PEARL & NAIL RIVETING MACHINE -----	49
JD-501S/X	五爪扣自动铆合机	AUTOMATIC FIVE-CLAW NAIL RIVETING MACHINE -----	50
BD-102A	鞋口/帮面锤平机	POUNDING MACHINE -----	51
JD-834C	电脑全自动钉扣机	COMPUTERIZED AUTO-NAILING MACHINE -----	52
BD-316B	双工位中底成型机	DOUBLE-STATION INSOLE MOULDING MACHINE -----	53
BD-316C	加厚型大压力双工位中底成型机	BIG POWER DOUBLE-STATION INSOLE MOULDING MACHINE -----	54
BD-316E	加厚型大压力双工位中底成型机	BIG POWER DOUBLE-STATION INSOLE MOULDING MACHINE -----	55
JD-811	全自动中底铆钉机	AUTOMATIC INSOLE RIVETING MACHINE -----	56
JD-826	自动中底铣槽机	AUTOMATIC INSOLE SLOT MILLING MACHINE -----	57
JD-313	自动中底修边机	AUTOMATIC INSOLE TRIMMING MACHINE -----	58
BD-312A/B	自动变速中底修边机	AUTOMATIC SPEED INSOLE TRIMMING MACHINE -----	59
BD-325	强力胶上糊机	CEMENTING MACHINE -----	60
BD-326	强力胶软轮上糊机	SOFT CYLINDER INSOLE CEMENTING MACHINE -----	61
JD-328B	自动双头中底削薄机	AUTOMATIC DOUBLE-HEADED INSOLE SKIVING MACHINE -----	62
JD-317A	中底贴合机	INSOLE JOINTING MACHINE -----	63
BD-340	压合机	PRESSING AND JOINTING MACHINE -----	64

BD-L620W
PLC BAND KNIFE SPLITTING MACHINE
带刀片皮机



用途 USE

该机适用于将皮革制品行业中宽620mm，厚8mm以下的各种软、硬皮料片薄、片匀至任意所要求厚度作业，使产品质量更高，做工更细，竞争力更强。

The machine adapts to splitting the hard or soft leather symmetrically, which the width is less than 620mm and the thickness is less than 8mm, according the required thickness in the industry of leather products, improve the quality of products and strengthen the competitiveness of markets.



特点

BD-L620W型带刀片皮机是炬达机械应对市场要求开发的最新一代片皮机。该机采用精密的结构，优良的材质，先进的加工工艺，严谨的制造流程，为客户提供可靠的质量保证，为客户创造更多的效益。

- PLC液晶显示片皮厚度，进料无级变速，且具备精确的计数功能。
- 新式面板使用进料更方便，快捷。
- 具备自动切削倒退功能。
- 自动进刀定位装置，无须调整刀具。
- 自动调整刀具间隙，使片削精度更高。
- 光学放大镜，随时观测刀口锋利。
- 独立的皮屑吸尘和磨刀粉尘吸尘装置。
- 皮料卷入自动停机系统，电子相位自动检测系统。
- 单一手柄启动自动控制及调整磨刀装置。
- 特大飞轮使带刀运作更加稳定、精确。
- 精确的轨道使飞轮移动可靠，更换刀带更快、简便。
- 机械部件永久润滑。
- 配选模具，可变化多种功能。

CHARACTERS

BD-L620W band knife splitting machine is a new generation of splitting machine developed by JUDA machinery according to the request of the market. Precise structure, excellent material, high-class processing technic, rigorous process of manufacturing, guarantee the quality and create benefit for the clients.

- Splitting thickness displayed by plc LCD, the infinitely variable adjustment of feeding, accurate number counting function.
- New panel make the feeding process more conveniently and quickly.
- With function of dropping out when it is splitting.
- With automatic feed registration device, no need to adjust cutting tool.
- Adjust the clearance of pressure pad and cutting tool automatically to make the splitting precision much higher.
- Optical magnifier which can see the sharpness of the knife edge.
- Freestanding set of dust absorbing and knife grinding dust absorbing device.
- Automatic pause system when leather material entangles in and automatic detection system of electronic phase.
- Adjusting knife grinding with the single handle device and automatic control equipment when starting.
- The outsize flying wheel makes the operation of band knife more steady and exact.
- The accurate rail makes the movement of flying wheel more reliable, and the replacement of band knife more easily and conveniently.
- The mechanical parts always lubricate.
- Different functions can be provided by selecting different moulds.

技术参数

型 号	BD-L620W	Model	BD-L620W
最大片削宽度	620毫米	Max width of split	620mm
最大片削厚度	8毫米	Max thickness of split	8mm
最小削薄厚度	上进料杆 0.15毫米	Min Thickness of Split	0.15mmwith top bar
	上进料辊 0.5毫米		0.5mm with top feed roller
进料速度	1~20米/分	Feeding speed	1-20m/min
带刀规格	3970×50×0.8毫米	Specification of band knife	3970×50×0.8mm
电机功率	3.5千瓦	Power of motor	3.5kW
外形尺寸	1820×960×1420毫米	Machine size	1820×960×1420mm
包装尺寸	2000×1130×1500毫米	Package size	2000×1130×1500mm
净 量	800公斤	Net Weight	800kg
毛 重	890公斤	Gross Weight	890kg

PARAMETER

BD-L520W

PLC BAND KNIFE SPLITTING MACHINE

| 带刀片皮机 |



用途 USE

该机适用于将皮革制品行业中宽520mm，厚8mm以下的各种软、硬皮料片薄、片匀至任意所要求厚度作业，使产品质量更高，做工更细，竞争力更强。

The machine adapts to splitting the hard or soft leather symmetrically, which the width is less than 520mm and the thickness is less than 8mm, according the required thickness in the indusrty of leather products, improve the quality of products and strengthen the competitiveness of markets.

特点

- BD-L520W承继了BD-L620W的强大功能和所有优点。
- 自动进刀定位装置，无须调整刀具。
- 具备自动切削倒退功能。
- 皮料卷入自动停机系统，电子相位自动检测系统。
- 独立的皮屑吸尘和磨刀粉尘吸尘装置。
- 特大飞轮使带刀运作更加稳定、精确。

CHARACTERS

- BD-L520W inherits the BD-L620W great function and all advantages.
- With automatic feed registration device, no need to adjust cutting tool.
- With function of dropping out when it is splitting.
- Automatic pause system when leather material entangles in and automatic detection system of electronic phase.
- Freestanding set of dust absorbing and knife grinding dust absorbing device.
- The outsize flying wheel makes the operation of band knife more steady and exact.

技术参数

型 号	BD-L520W	Model	BD-L520W
最大片削宽度	520毫米	Max width of split	520mm
最大片削厚度	8毫米	Max thickness of split	8mm
最小削薄厚度	上进料杆 0.15毫米	Min thickness of split	0.15mmwith top bar
	上进料辊 0.5毫米		0.5mm with top feed roller
带刀规格	3810×50×0.6毫米	Specification of band knife	3810×50×0.6mm
包装尺寸	1900×1130×1500毫米	Package size	1900×1500×1130mm
毛重/净重	850公斤/760公斤	Gross weight / Net weight	850kg/760kg

BD-L420W

PLC BAND KNIFE SPLITTING MACHINE

| 带刀片皮机 |



用途 USE

该机适用于对皮革制品行业中宽420mm，厚为8mm以下的硬、软皮料进行片薄、片匀至所要求厚度的设备。可任意调节片削厚度，提高产品质量，增强市场竞争力。

The machine adapts to splitting the hard or soft leather symmetrically, which the width is less than 420mm and the thickness is less than 8mm, according to the required thickness in the industry of leather products. It can adjust the splitting thickness freely, improve the quality of products and strengthen the competitiveness of markets.

特点

- PLC液晶显示片皮厚度，进料无级变速，且具备精确的计数功能。
- 自动进刀定位装置，无须调整刀具。
- 皮料卷入自动停机系统，电子相位自动检测系统。
- 独立皮屑吸尘装置，磨刀粉尘吸尘系统。
- 精确的轨道使飞轮移动可靠，带刀更换更简便。

CHARACTERS

- Splitting thickness displayed by plc LCD, the infinitely variable adjustment of feeding, accurate number counting function.
- With automatic feed registration device, no need to adjust cutting tool.
- Automatic pause system when leather material entangles in and automatic detection system of electronic phase.
- Freestanding set of dust absorbing and knife grinding dust absorbing device.
- The accurate rail makes the movement of flying wheel more reliable, and the replacement of band knife more easily and conveniently.

技术参数

型 号	BD-L420W	Model	BD-L420W
最大片削宽度	420毫米	Max width of split	420mm
最大片削厚度	8毫米	Max thickness of split	8mm
最小削薄厚度	上进料杆 0.15毫米	Min thickness of split	0.15mmwith top bar
	上进料辊 0.5毫米		0.5mm with top feed roller
带刀规格	3570×50×0.6毫米	Specification of band knife	3570×50×0.6mm
包装尺寸	1780×1130×1500毫米	Package size	1780×1130×1500mm
毛重/净重	810公斤/720公斤	Gross weight / Net weight	810kg/720kg

BD-420W

PLC BAND KNIFE SPLITTING MACHINE

| 带刀片皮机 |



用途 USE

该机适用于对皮革制品行业中宽420mm，厚为8mm以下的硬、软皮料进行片薄、片匀至所要求厚度的设备。可任意调节片削厚度，提高产品质量，增强市场竞争力。

The machine adapts to splitting the hard or soft leather symmetrically, which the width is less than 420mm and the thickness is less than 8mm, according to the required thickness in the industry of leather products. It can adjust the splitting thickness freely, improve the quality of products and strengthen the competitiveness of markets.

特点

- 数字显示片皮厚度，进料无级变速，且具备精确的计数功能。
- 自动进刀定位装置，无须调整刀具。
- 自动调整刀具压力板间隙，使片削精度更高。
- 皮料卷入自动停机系统，电子相位自动检测系统。
- 独立皮屑吸尘装置，磨刀粉尘吸尘系统。

CHARACTERS

- Splitting thickness displayed by plc LCD, the infinitely variable adjustment of feeding, accurate number counting function.
- With automatic feed registration device, no need to adjust cutting tool.
- Adjust the clearance of pressure pad and cutting tool automatically to make the splitting precision much higher.
- Automatic pause system when leather material entangles in and automatic detection system of electronic phase.
- Freestanding set of dust absorbing and knife grinding dust absorbing device.

技术参数

型 号	BD-420W	Model	BD-420W
最大片削宽度	420毫米	Max width of split	420mm
最大片削厚度	8毫米	Max thickness of split	8mm
最小削薄厚度	上进料杆 0.15毫米	Min thickness of split	0.15mmwith top bar
	上进料辊 0.5毫米		0.5mm with top feed roller
带刀规格	3570×50×0.6毫米	Specification of band knife	3570×50×0.6mm
包装尺寸	1780×1130×1500毫米	Package size	1780×1130×1500mm
毛重/净重	810公斤/720公斤	Gross weight / Net weight	810kg/720kg

PARAMETER

BD-400A

PLC BAND KNIFE SPLITTING MACHINE

| 带刀片皮机 |



用途 USE

该机适用于对皮革制品行业中宽400mm，厚为8mm以下的硬、软皮料进行片薄、片匀至所要求厚度。

The machine adapts to splitting the hard or soft leather symmetrically, which the width is less than 400mm and the thickness is less than 8mm, according to the required thickness in the industry of leather products.

特点

- PLC液晶显示片皮厚度，进料无级变速，且具备精确的计数功能。
- 自动进刀定位装置，无须调整刀具。
- 自动调整刀具压力板间隙，使片削精度更高。
- 皮料卷入自动停机系统，电子相位自动检测系统。
- 独立皮屑吸尘装置。

CHARACTERS

- Splitting thickness displayed by plc LCD, the infinitely variable adjustment of feeding, accurate number counting function.
- With automatic feed registration device, no need to adjust cutting tool.
- Adjust the clearance of pressure pad and cutting tool automatically to make the splitting precision much higher.
- Automatic pause system when leather material entangles in and automatic detection system of electronic phase.
- Freestanding set of dust absorbing device.

技术参数

型 号	BD-400A	Model	BD-400A
最大片削宽度	400毫米	Max width of split	400mm
最大片削厚度	8毫米	Max thickness of split	8mm
最小削薄厚度	上进料杆 0.15毫米	Min thickness of split	0.15mmwith top bar
	上进料辊 0.5毫米		0.5mm with top feed roller
带刀规格	2830×50×0.6毫米	Specification of band knife	2830×50×0.6mm
包装尺寸	1430×1130×1275毫米	Package size	1430×1130×1275mm
毛重/净重	650公斤/560公斤	Gross weight / Net weight	650kg/560kg

PARAMETER

JD-300

PLC BAND KNIFE SPLITTING MACHINE

带刀片皮机



专利产品

用途 USE

该机适用于对皮革制品行业中宽300毫米以下的硬、软皮料进行片薄、片匀至所要求厚度。
The machine adapts to splitting the hard or soft leather symmetrically, which the width is less than 300mm, according to the required thickness in the industry of leather products.

特点

- PLC液晶显示片皮厚度，进料无级变速，且具备精确的计数功能。
- 自动进刀定位装置，无须调整刀具。
- 具备自动切削倒退功能。
- 自动调整刀具压力板间隙，使片削精度更高。
- 独立皮屑吸尘装置，电子相位自动检测系统。

CHARACTERS

- Splitting thickness displayed by plc LCD, the infinitely variable adjustment of feeding, accurate number counting function.
- With automatic feed registration device, no need to adjust cutting tool.
- With function of dropping out when it is splitting.
- Adjust the clearance of pressure pad and cutting tool automatically to make the splitting precision much higher.
- Freestanding set of dust absorbing device, automatic detection system of electronic phase.

技术参数

型 号	JD-300	Model	JD-300
最大切削宽度	300毫米	Maximal width of split	300mm
剖削厚度	采用双送料辊0.6~8毫米	Min thickness of cutting	Adopt two feeding rollers 0.6-8mm
	采用送料杆0.2~8毫米		Adopt feeding bar 0.2-8mm
带刀规格	2630×50×0.6毫米	Specification of band knife	2630×50×0.6mm
电机功率	3.2千瓦	Motor power	3.2kW
包装尺寸	1330×1130×1200毫米	Package size	1330×1130×1200mm
毛重/净重	580公斤/500公斤	Gross weight / Net weight	580kg/500kg

PARAMETER

JD-266

COMPUTERIZED LOCALIZATION SKIVING MACHINE

电脑选位圆刀削皮机



- 可记忆99组削边数据。
- 一组削边数据可有1-7个不同的削边规格。
- 一组内编多种削边规格，能快速切换削边工作。

用途 USE

该机适用于鞋、箱包、皮具等行业中各种皮革、人造革、橡胶类面料的边沿削薄。该机具备电脑记忆功能，使削薄效果更精准，操作更简单。
大大降低对操作人员的技术依赖和面料的损坏。
This machines can be used in shoe ,bag and leather industry to skiving the edge of leather, artificial leather and rubber materials thinner. This machines have the function of computer memory which can make the skiving effect more accurate and the operation much easier. This machine also lower the technical dependence of operator and the damage to the material.

特点

- 削边要求数字化，削边效果更精准。
- 一个削边规格能同时输入宽度、厚度、角度三种不同要求。
- 精确的数据，大缩小相同工件之间的误差。
- 大大降低目前对操作人员技术要求的依赖。
- 不同数据任意搭配，切削工作一次完成。
- 记忆存储功能，可记忆99组切削要求。
- 一组可编入1-7个削边规格。
- 任意调节切削送料速度。
- 强大的吸尘系统。

CHARACTERS

- The request of edge skiving is digitalized to make the edge skiving effect more accurate.
- One skiving size can have three different requitement, like width, thickness angle.
- Accurate data makes the error among the same batch smaller.
- Greatly lower the technical dependence of operator at present.
- Different data can be matched arbitrarily and the process can be finished in one time.
- The function of memory storage , can store 99 requests of skiving .
- One team can have 1-7 different skiving size.
- The speed of feeding can be adjusted arbitrarily.
- Great dust absorbing system.

技术参数

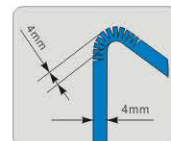
型 号	JD-266	Model	JD-266
电 源	220伏 50-60赫兹	Power	220V 50-60Hz
总 功 率	1.35千瓦	Power of motor	1.35kW
包装尺寸	1200×550×1160毫米	Package size	1200×550×1160mm
毛重/净重	175公斤/135公斤	Gross weight / Net weight	175kg/135kg

PARAMETER

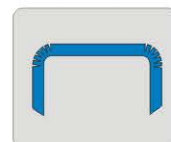
JD-298A

COMPUTERIZED INTELLIGENCE FOLDING MACHINE

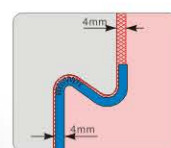
电脑智能折边机



稳定的折边宽度
Steady folding width



自动切齿模式
Automatic cutting mode



可折4mm补强带（选配件）
4mm reinforce tape application(optional)

用途 USE

用于制鞋业、制包业、皮具业、手机套等皮制品的PVC、PU、天然皮、人造皮、帆布等材料，使用热熔胶折边作业。
The machine carries out hot-melt adhesive folding operation of leather products, PVC, PU, natural leather, artificial leather, canvas and other material in shoe-making industry, leather industry, handbag industry, cell phone case and etc.

特点

- 无需脚踏自动折边。
- 外弯、直线、内弯折边拉动行程可分别设定。
- 胶头自动提升不需脚靠。
- 内弯折边时，宽度自动补偿，自动切剪。
- 10个光电眼感应位置可选择，控制折边自动变化。
- 出胶系统双重保护，自动吸胶，不挂胶。

CHARACTERS

- Automatic folding and without riding pedal.
- The distance of folding process in outcurve, straight line and incurved can be set separately.
- Automatic glue head lifting and no need to step.
- When folding incurved, the width will be make up and cutting automatically.
- 10 photoelectric eye locations are optional in order to control the automatic change when folding.
- The dual protection of gluing system can make no glue drop and absorb the glue automatically.

技术参数

型 号	JD-298A	Model	JD-298A
电 源	220伏 50-60赫兹	Working voltage	220V 50-60Hz
总 功 率	1.9千瓦	Total power	1.9kW
折边宽度	3-7毫米	Folding width	3-7mm
包装尺寸	1430×730×1300毫米	Package size	1430×730×1300mm
毛重/净重	225公斤/185公斤	Gross weight / Net weight	225kg/185kg

JD-293A

AUTOMATIC SPEED CHANGE CEMENTING & FOLDING MACHINE

自动变速上胶折边机

全国独家生产配置：
外弯、直线、内弯数字显示调节变速，
电脑芯片控制步进电机转弯变速，
并非电磁铁吸动变速。



专利产品

用途 USE

用于制鞋业、制包业、皮具业、手机套等皮制品的PVC、PU、天然皮、人造皮、帆布等材料，使用热熔胶折边作业。
The machine carries out hot-melt adhesive folding operation of leather products, PVC, PU, natural leather, artificial leather, canvas and other material in shoe-making industry, leather industry, handbag industry, cell phone case and etc.



普通折边



中底包边



反口折边

特点

- 不需脚踏，自动折边作业。
- 采用电脑芯片处理电路系统，步进电机控制内弯、直线、外弯变距功能。
- 胶头自动提升不需脚靠。
- 内弯折边自动切剪。
- 出胶系统双重保护，自动吸胶，不挂胶。
- 伺服电子马达自动定位，节能（省电）70%。

CHARACTERS

- Automatic folding and without riding pedal.
- The machine adopt the computer chip to deal with the circus system, and adopt driving motor to control the function of distance change incurved, straight line and outcurve.
- Automatic glue head lifting and no need to step.
- Automatic cutting when incurved.
- The dual protection of gluing system can make no glue drop and absorb the glue automatically.
- With the automatic electronic locating of servo motor, it can save 70% energy and electricity.

技术参数

型 号	JD-293A	Model	JD-293A
电 源	220伏 50-60赫兹	Power	220V 50-60Hz
电机功率	0.65千瓦	Power of motor	0.65kW
总 功 率	1.9千瓦	Total power	1.9kW
包装尺寸	1430×730×1300毫米	Package size	1430×730×1300mm
毛重/净重	150公斤/110公斤	Gross weight / Net weight	150kg/110kg

JD-292A

AUTOMATIC SPEED CHANGE CEMENTING & FOLDING MACHINE

自动变速上胶折边机



专利产品

用途 USE

该机适用于鞋类、皮包、钱包、手机套等皮制品的PVC、PU、天然皮、人造皮、布料等材质，使用热熔胶自动上胶折边作业。
The machine adapts to the material of PVC, PU, natural leather, artificial leather and cloth for shoes, leather bag, wallet and cell phone case which are made of leather, it can automatically gelatinize and fold with hot-melt adhesive.

特点

- 采用电脑芯片处理电路系统，步进电机控制内弯、直线、外弯变距功能，使整个作业过程实现智能化。
- 触摸式数字显示控制面板，溶胶温度、出胶流量、出胶温度无级调节。
- 内弯自动切齿功能，出胶系统双重保护。
- 先进的翻折机构，调节方便，折边细致平整、宽度均匀、美观。
- 折边宽度可调整3mm-6.5mm，可将补强带一并折入。
- 伺服电子马达自动定位，节能（省电）40%。

技术参数

型 号	JD-292A	Model	JD-292A
电 源	220伏 50-60赫兹	Power	220V 50-60Hz
电机功率	0.55千瓦	Power of motor	0.55kW
包装尺寸	1430×730×1300毫米	Package size	1430×730×1300mm
毛重/净重	150公斤/110公斤	Gross weight / Net weight	150kg/110kg

CHARACTERS

- The machine adopt the computer chip to deal with the circus system, and adopt driving motor to control the function of distance change incurved, straight line and outcurve.
- Adopt touch pattern control panel, temperature of melted glue, quantity of glue outflow, temperature of glue outflow can be adjusted infinitely.
- It has function of automatic cutting when incurved and dual protection of gluing system.
- The advanced folding mechanism can be adjusted easily, it has neat folding, even width and looks smooth and beautiful.
- The width of folding can be adjusted from 3mm to 6.5mm, and the reinforce tape can be folded in together.
- With the automatic electronic locating of servo motor, it can save 40% energy and electricity.

PARAMETER

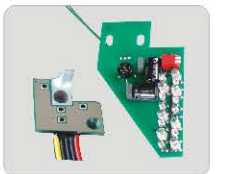
JD-292

AUTOMATIC SPEED CHANGE CEMENTING & FOLDING MACHINE

自动变速上胶折边机



数字显示调节变速步距，电脑控制自动切换外弯、直线、内弯的折边速度。



专利产品

用途 USE

该机适用于鞋类、皮包、钱包、手机套等皮制品的PVC、PU、天然皮、人造皮、布料等材质，使用热熔胶自动上胶折边作业。
The machine adapts to the material of PVC, PU, natural leather, artificial leather and cloth for shoes, leather bag, wallet and cell phone case which are made of leather, it can automatically gelatinize and fold with hot-melt adhesive.

特点

- 采用电脑芯片处理电路系统，步进电机控制内弯、直线、外弯变距功能，使整个作业过程实现智能化。
- 触摸式数字显示控制面板，溶胶温度、出胶流量、出胶温度无级调节。
- 内弯自动切齿功能，出胶系统双重保护。
- 先进的翻折机构，调节方便，折边细致平整、宽度均匀、美观。
- 折边宽度可调整3mm-6.5mm，可将补强带一并折入。
- 外弯、直线、内弯折边拉动行程分别可调1-8mm范围。

技术参数

型 号	JD-292	Model	JD-292
电 源	220伏 50-60赫兹	Power	220V 50-60Hz
电机功率	0.25千瓦	Power of motor	0.25kW
包装尺寸	1430×730×1300毫米	Package size	1430×730×1300mm
毛重/净重	138公斤/98公斤	Gross weight / Net weight	138kg/98kg

CHARACTERS

- The machine adopt the computer chip to deal with the circus system, and adopt driving motor to control the function of distance change incurve, straight line and outcurve.
- Adopt touch pattern control panel, temperature of melted glue, quantity of glue outflow, temperature of glue outflow can be adjusted infinitely.
- It has function of automatic cutting when incurve and dual protection of gluing system.
- The advanced folding mechanism can be adjusted easily, it has neat folding, even width and looks smooth and beautiful.
- The width of folding can be adjusted from 3mm to 6.5mm, and the reinforce tape can be folded in together.
- The distance of folding process can be adjusted from 1mm to 8mm.

PARAMETER

BD-291A

COMPUTERIZED HOT-CEMENT FOLDING MACHINE

| 自动上胶折边机 |



用途 USE

该机适用于鞋类、皮包、手机套等皮制品的PVC、PU、天然皮、人造皮、布料等材质，使用热熔胶自动上胶折边作业。

The machine adapts to the material of PVC, PU, natural leather, artificial leather and cloth for shoes, leather bag, wallet and cell phone case which are made of leather, it can automatically gelatinize and fold with hot-melt adhesive.

特点

该机采用单片机控制上胶折边作业，整个过程作业实现了智能化。

- 触摸式数字显示控制面板，溶胶温度、出胶流量、出胶温度无级调节。
- 外弯折边时，电磁铁传动自动控制慢速。
- 内弯自动切齿功能，出胶系统双重保护。
- 先进的翻折机构，调节方便，折边细致平整、宽度均匀、圆滑美观。
- 伺服电子马达自动定位，节能（省电）40%。
- 折边宽度可调整3mm-6.5mm，可将补强带一并折入。

技术参数

型 号	BD-291A	Model	BD-291A
电机功率	0.55千瓦	Power of motor	0.55kW
包装尺寸	1430×730×1300毫米	Package size	1430×730×1300mm
毛重/净重	150公斤/110公斤	Gross weight / Net weight	150kg/110kg

CHARACTERS

The machine adopts the single chip to control gluing and folding, the whole process realizes intelligence.

- Adopt touch pattern control panel, temperature of melted glue, quantity of glue outflow, temperature of glue outflow can be adjusted infinitely.
- The electromagnet transmission control slowing down the speed when folding outcurve.
- It has function of automatic cutting when incurved and dual protection of gluing system.
- The advanced folding mechanism can be adjusted easily, it has neat folding, even width and looks smooth and beautiful.
- With the automatic electronic locating of servo motor, it can save 40% energy and electricity.
- The width of folding can be adjusted between 3mm and 6.5mm, and the reinforce tape can be folded in together.

PARAMETER

BD-291

COMPUTERIZED HOT-CEMENT FOLDING MACHINE

| 自动上胶折边机 |



用途 USE

该机适用于鞋类、皮包、手机套等皮制品的PVC、PU、天然皮、人造皮、布料等材质，使用热熔胶自动上胶折边作业。

The machine adapts to the material of PVC, PU, natural leather, artificial leather and cloth for shoes, leather bag, wallet and cell phone case which are made of leather, it can automatically gelatinize and fold with hot-melt adhesive.

特点

该机采用单片机控制上胶折边作业，整个过程作业实现了智能化。

- 采用触摸式控制面板，溶胶温度、出胶流量、出胶温度数字显示，出胶量无级调节。
- 先进的翻折机构，调节轻易简便，折边细致平整，宽度均匀、光滑、美观。
- 折边宽度可调整3mm-6.5mm，可将补强一并折入。
- 具有内弯切齿功能，出胶系统双重保护，性能优异。
- 工作效率为手工操作5-10 倍。

技术参数

型 号	BD-291	Model	BD-291
电机功率	0.25千瓦	Power of motor	0.25kW
包装尺寸	1430×730×1300毫米	Package size	1430×730×1300mm
毛重/净重	138公斤/98公斤	Gross weight / Net weight	138kg/98kg

CHARACTERS

The machine adopts the single chip to control gluing and folding, the whole process realizes intelligence.

- Adopt the touch pattern control panel, numerical indication of melt glue temperature, outflow glue quantity and outflow glue temperature and the infinitely variable adjustment of outflow glue.
- The advanced folding mechanism can be adjusted easily. It has neat folding, even width, and it is smooth and beautiful.
- The width of folding can be adjusted from 3mm to 6.5mm, and the reinforce tape can be folded in together.
- It has the function of incurved incisor. The glue output system adopts dual protection, and the performance is excellent
- The work efficiency is 5-10 times of manual operation.

PARAMETER

JD-295A

AUTOMATIC CEMENTING, SEPARATING SIDES & POUNDING MACHINE

| 自动上胶分边锤平机 |



用途 USE

该机用于鞋帮、箱包、手机套等各种皮制品的PVC、PU、天然皮、人造皮、布料材质的接缝进行自动分边，上胶，锤平的多工序一体化作业。通过该机操作能提高工作效率，减少工序，不伤面料等优点。

The machine adapts to integrative task of multi-working procedure of the automatic edge division, gluing and pounding of joint of the material of PVC, PU leather, natural leather, synthetic leather and cloth material for shoes upper, luggages and cell phone cases and all kinds of leather products. The machine can improve the work efficiency, reduce working procedure, and do not damage the material and other advantages.

特点

- 采用触摸式控制面板，熔胶温度、出胶流量、出胶温度数字显示，出胶流量无级调节。
- 左右出胶采用双泵体出胶系统，使左右出胶流量分别可调。
- 通过光感电阻与机器运行参数双层保护控制出胶流量，使出胶稳定，快慢同步随意。
- 采用热熔胶自动上胶、分边、锤平一体化，可节省人工上白胶、黄胶、过烤箱时间，并且符合环保。
- 伺服电子马达自动定位，节能（省电）40%。

技术参数

型 号	JD-295A	Model	JD-295A
电 源	220伏 50-60赫兹	Power	220V 50-60Hz
电机功率	0.55千瓦	Power of motor	0.55kW
包装尺寸	1280×730×1400毫米	Package size	1280×730×1400mm
毛重/净重	153公斤/113公斤	Gross weight / Net weight	153kg/113kg

CHARACTERS

- Adopt touch pattern control panel, numerical indication of melt glue temperature, outflow glue quantity and outflow glue temperature, infinitely variable speed adjustment of outflow glue quantity.
- The machine adopts the gluing system of two pumps, which makes the quantity of outflow from left glue head and right gluing head can be adjust separately.
- The dual protection by light resistance and parameter of machine working controls outflow glue quantity, which makes the outflow glue steadily and the speed optional.
- Adopt the automatic gelatinization, edge division, pounding integrative of hot-melt adhesive glue, which save the time of gluing raw rubber latex, power glue and heating time, also accordance with environment protection.
- With the automatic electronic locating of servo motor, it can save 40% energy and electricity.

PARAMETER

JD-226

AUTOMATIC CEMENTING & LAYERING MACHINE

| 自动上胶压条机 |



用途 USE

该机用于鞋帮、箱包、手机套等各种皮制品的PVC、PU、天然皮、人造皮、布料材质的接缝进行自动上胶，压平的多工序一体化作业。通过该机操作能提高工作效率，减少工序，不伤面料等优点。

The machine adapts to integrative task of multi-working procedure of the automatic gluing and flatting of joint of the material of PVC, PU leather, natural leather, synthetic leather and cloth material for shoes upper, luggages and cell phone cases and all kinds of leather products. The machine can improve the work efficiency, reduce working procedure, and do not damage the material and other advantages.

特点

- 采用触摸式控制面板，熔胶温度、出胶流量、出胶温度数字显示，出胶流量无级调节。
- 瀑布式出胶采用单泵体出胶系统，使出胶面平顺，流量均等，压合均匀，出胶量可调。
- 采用热熔胶自动上胶、压平一体化，可节省人工上白胶、黄胶、过烤箱的时间，并符合环保。
- 通过光感电阻与机器运行参数双层保护控制出胶流量，使出胶稳定，快慢同步随意。
- 伺服电子马达自动定位，节能（省电）40%。

技术参数

型 号	JD-226	Model	JD-226
电 源	220伏 50-60赫兹	Power	220V 50-60Hz
总 功 率	1.2千瓦	Total power	1.2kW
包装尺寸	1280×730×1400毫米	Package size	1280×730×1400mm
毛重/净重	153公斤/113公斤	Gross weight / Net weight	153kg/113kg

CHARACTERS

- Adopt touch pattern control panel, numerical indication of melt glue temperature, outflow glue quantity and outflow glue temperature, infinitely variable speed adjustment of outflow glue quantity.
- Waterfall type outflow gluing system by a single pump, make gluing surface smooth, flow equalization, uniform pressure, the glue quantity is adjustable.
- Adopt the automatic gelatinization, edge division, pounding integrative of hot-melt adhesive glue, which save the time of gluing raw rubber latex, power glue and heating time, also accordance with environment protection.
- The dual protection by light resistance and parameter of machine working controls outflow glue quantity, which makes the outflow glue steadily and the speed optional.
- With the automatic electronic locating of servo motor, it can save 40% energy and electricity.

PARAMETER

BD-296A

AUTOMATIC HOT-CEMENT COVERING MACHINE

| 自动上胶包条机 |



用途 USE

该机适用于皮鞋的中底周边自动上胶包条作业。
This machine adapts to gluing & covering the insole sideline of leather shoes automatically.

特点

- 采用触摸式控制面板,溶胶温度、出胶流量、出胶温度数字显示,出胶量无级调节。
- 上下出胶采用双泵体出胶系统,使上下出胶流量分别可调。
- 依中底周边长度设定包条长度,所需包条长度自动送料、剪断。
- 伺服电子马达自动定位,节能(省电)40%。

CHARACTERS

- Adopt the touch pattern control panel, numerical indication of melt glue temperature, outflow glue quantity and outflow glue temperature and the infinitely variable adjustment of outflow glue.
- The machine adopts the gluing system of dual pumps, which makes adjusted of outflow from upper glue head and lower gluing head can be adjust separately.
- Can set up the covering length according to the length of insole sideline, and the needed covering length can be fed and cut automatically.
- With the automatic electronic locating of servo motor, it can save 40% energy and electricity.

技术参数

型 号	BD-296A	Model	BD-296A
电机功率	0.75千瓦	Power of motor	0.75kW
产 量	2000双/8小时	Output	2000pairs/8hrs
包装尺寸	1280×730×1350毫米	Package size	1280×730×1350mm
毛重/净重	175公斤/135公斤	Gross weight / Net weight	175kg/135kg

BD-296B

AUTOMATIC CEMENTING AND COVERING ZIPPER MACHINE

| 自动上胶包拉链机 |



用途 USE

该机适用于各类包包自动上胶包拉链作业。
The machine adapts to gluing and covering zippers of bags automatically.

特点

- 采用触摸式控制面板、溶胶温度、出胶流量、出胶温度数字显示,出胶流量无级调节。
- 上下出胶采用双泵体出胶系统,使上下出胶流量分别可调。
- 根据包包模具周边长度设定包拉链长度,所需包拉链长度自动送料,剪断。
- 伺服电子马达自动定位,节能(省电)40%。

CHARACTERS

- Adopt the touch pattern control panel, numerical indication of melt glue temperature, outflow glue quantity and outflow glue temperature and the infinitely variable adjustment of outflow glue.
- The machine adopts the gluing system of dual pumps, which makes adjusted of outflow from upper glue head and lower gluing head can be adjust separately.
- Set zipper length according to bag mould peripheral length, feed zipper automatically, cut off.
- With the automatic electronic locating of servo motor, it can save 40% energy and electricity.

技术参数

型 号	BD-296B	Model	BD-296B
总 功 率	1.2千瓦	Total power	1.2kW
电 源	220伏 50-60赫兹	Power	220V 50-60Hz
包装尺寸	1280×730×1350毫米	Package size	1280×730×1350mm
毛重/净重	175公斤/135公斤	Gross weight / Net weight	175kg/135kg

BD-202

UPPER FOLDING MACHINE/INSOLE BINDING MACHINE

中底包边机



用途 USE

BD-200型用于鞋类、皮制品、服装等已上胶的PVC、PU皮、天然皮、人造皮、皮料的折边。BD-202型用于鞋中底、高级泡棉中底的包边, 皮包业中附纸或硬板之圆角包边。
BD-200 adapts to folding on PVC, PU leather, natural leather, leatherette and cloth of shoes, leather products and clothes which have already cemented. BD-202 is used for binding of insole, high-grade foam insole, and it also is used for round angle and binding of all interlayer card boards or hard boards in leather bags industry.

特点

该机对部分部件更换可具备折边于包中底两种功能。

- 该机采用先进的翻折机构，调节轻易简便，折边细致平整。
- 折边宽度可调整3mm~6.5mm,可将补强带一并折入。
- 对鞋面折边机进行更换随机部件，可改装包边机用。
- 性能可靠，操作简单。
- 效率为手工操作5~10倍的工作量。

CHARACTERS

The machine has the functions of folding and insole binding by replacing some parts.

- The machine adopts advanced folding mechanism and can be operated easily, make edge folding neatly
- The folding width can be adjusted from 3mm to 6.5mm, and can fold with reinforce tape.
- Change the accessories of upper folding machine which can be refitted to binding machine.
- Reliable performance and easy operation.
- The efficiency is 5-10 times of manual operation.

技术参数

型 号	BD-202	Model	BD-202
电机功率	0.4千瓦	Power of motor	0.4kW
包装尺寸	1430×730×1300毫米	Package size	1430×730×1300mm
毛重/净重	135公斤/95公斤	Gross weight / Net weight	135kg/95kg

BD-208A

SOLE & LINING TRIMMING MACHINE

鞋底·内里修边机



用途 USE

该机适用于各种鞋底毛边及鞋面内里修削。
This machine adapts to trimming all kinds of raw edge of sole and vamp lining.

特点

- 采用圆刀和直刀进行修削，使用时灵活方便。
 - 快速准确地安全修削毛边，修边光滑，不会伤及本体。
 - 该机结构配有磨刀装置。
 - 操作简单、生手易于学会。
 - 效率为手工操作5~8倍的工作量。
- 注：修削橡胶鞋底毛边可配用冷却水杯装置。

CHARACTERS

- Adopt round cutter and straight cutter to trim, and the operation is easily.
 - Can trim the raw edge quickly, exactly and safely, the trimmed edge is smooth without damage.
 - Equipped with cutter grinding device.
 - Simple operation, so newer can mastered it easily.
 - The efficiency is 5-8 times of manual operation.
- Pay: please equip with cooling water-cup device when trimming the raw edge of rubber soles.

技术参数

型 号	BD-208A	Model	BD-208A
电机功率	0.37千瓦	Power of motor	0.37kW
转 速	2800转/分	Motor rotation speed	2800rpm/min
毛重/净重	71公斤/68公斤	Gross weight / Net weight	71kg/68kg

BD-104

LEATHER SPIRE CUTTING LINE MACHINE

皮革螺旋切条机



专利产品

精密丝杆传动，
切条宽度无级调节。

用途USE

该机是将厚度为0.5mm至4mm的软，硬皮革切条成条状至所要求宽度的一种设备。它具有切条精度高。切条速度快，切条宽度可调设有磨刀装置功能等优点。该机普遍使用在服装，箱包，制鞋（真皮鞋带）等行业所用原材料的切条。

The machine is used for cutting soft or hard leather, which the thickness is from 0.5mm to 4mm, into the needed width line. It has functions of high accuracy, fast cutting speed, adjustable cutting width and equipping with knife-grinder. The machine is widely used for cutting line of raw material that used in industries such as clothes, case and bag, shoe making (leather shoelace), etc.



JD-98

AUTOMATIC PUNCHING & EYELETTING MACHINE

全自动冲孔钉气眼机



用途USE

本机主要适用于高档皮鞋皮具、服装箱包、办公用品等行业的气眼铆合，适用于各种皮革制品、针织布料及合成材料的加工。

This machine is mainly suitable for eyelet riveting works at high-grade leather shoes, leather goods, clothing bags, office supplies and other industries, suitable for various of leather products, knitted fabrics and composite materials processing.

特点

- 本机采用智能控制，待机时主电机不启动，高效节能。
- 冲孔和铆合在同一工位先后完成，快捷准确，大幅提高产品的良品率。
- 冲模和铆合模具采用进口高强度合金材料制造，不易磨损。
- 激光定位，让铆合更简单。
- 急停系统的设计，为机器检修和维护提供最好的安全防护。

CHARACTERS

- The machine adopts intelligent control, standby when the main motor does not start, high efficiency and energy saving.
- Successively completed for punching and riveting in the same station, quick and accurate, greatly increased the yield of product.
- Punching and riveting die adopts imported high strength alloy materials, not easy to wear and tear.
- Laser positioning, riveting easier.
- Scram system design for the machine maintenance and maintenance of providing security for the best.

技术参数

型 号	JD-98	Model	JD-98
电 源	220伏 50赫兹	Voltage	220V 50Hz
功 率	0.6千瓦	Power	0.6kW
加工速度	120次/分	Working speed	120times/min
适用规格	150号-600号	Suitable sizes	150#-600#
外形尺寸	1000×605×1530 毫米	Dimension	1000×605×1530mm
毛重/净重	280公斤 / 240公斤	Gross weight / Net weight	280kg/240kg

PARAMETER

技术参数

型 号	BD-104	Model	BD-104
电 源	220伏 50赫兹	Power	220V 50Hz
电机总功率	0.75千瓦	Power of motor	0.75kW
切条皮革厚度范围	0.5-4毫米	Thickness of the cut leather	0.5-4mm
切条速度	10-150米/分	Cutting speed	10-150m/min
切条宽度	2-10毫米	Cutting width	2-10mm
最大切割直径	1040毫米/1840毫米	Max cutting diameter	1040mm/1840mm
包装尺寸	1230×1140×1110毫米	Package size	1230×1140×1110mm
毛重/净重	235公斤/195公斤	Gross weight / Net weight	235kg/195kg

PARAMETER

BD-3A

AUTOMATIC EYELETTING MACHINE

| 自动气眼机 |



用途 USE

该机适用于皮鞋、布胶鞋、皮件、纸袋, 服装等金属单片鞋眼钉铆。
The machine adapts to riveting the metal single-side eyelets in leather shoes, canvas rubber shoes, leather, paper bag and clothing.

特点

- 该机具有单打或连续钉打鞋眼, 冲孔, 钉眼一次自动完成。
- 根据工作物的要求,可随意调节两眼孔距。
- 钉打的鞋眼细致, 工整不变形。
- 操作简单, 性能安全可靠。
- 效率为手工操作8-15倍的工作量。

CHARACTERS

- The machine can automatically punch or continuously punch and rivet eyelets, the punching and eyeletting can be finished once.
- Can adjust the pitch of two eyes freely according to the requirement.
- The riveted shoes eyes are neat, beautiful and ametabolic.
- Easy operation and reliable performance.
- The efficiency is 8-15 times of manual operation.

技术参数

型 号	BD-3A		Model	BD-3A
钉眼次数	240次/分		Nailing speed	240times/min
钉眼距离	12-35毫米		Spacing adjustment	12-35mm
钉眼规格	型号	150-600号	Nailing size	Size 150-600 #
	大小	8≥内径R≥3.5mm		Size 8≥Inside diameter≥3.5mm
		高度L≥2.2mm		
电机功率	0.55千瓦		Power of motor	0.55kW
包装尺寸	950×650×1720毫米		Package size	950×650×1720mm
毛重/净重	285公斤 /250公斤		Gross weight / Net weight	285kg/250kg

PARAMETER

BD-95

AUTOMATIC DOUBLE-SIDE EYELETTING MACHINE

| 自动双面钉（鞋）眼机 |



专利产品

用途 USE

该机适用于钉打鞋类、皮件、纸袋、服装等金属双面鞋眼。
The machine adapts to riveting the metal double-side eyelets in shoes, leather, paper bag and clothing

特点

- 该机具有单打或连续钉打鞋眼, 冲孔、打眼一次自动完成。
- 根据工作物的要求, 可随意调整两眼孔距。
- 铆合的鞋眼细致、美观, 工整不变型。
- 操作简单, 性能安全可靠。
- 效率为手工操作8-15倍的工作量。

CHARACTERS

- The machine can automatically punch or continuously punch and rivet eyelets, the punching and eyeletting can be finished once.
- Can adjust the pitch of two eyes freely according to the requirement.
- The riveted shoes eyes are neat, beautiful and ametabolic.
- Easy operation and reliable performance.
- The efficiency is 8-15 times of manual operation.

技术参数

型 号	BD-95		Model	BD-95
钉眼次数	220次/分		Nailing speed	220times/min
钉眼距离	12-35毫米		Spacing adjustment	12-35mm
钉眼规格	型号	150-600号	Nailing size	NO. 150-600 #
	大小	8≥内径R≥3.5mm		Size 8≥Inside diameter≥3.5mm
		高度L≥2.2mm		
电机功率	0.55千瓦		Power of motor	0.55kW
包装尺寸	950×650×1720毫米		Package size	950×650×1720mm
毛重/净重	285公斤/250公斤		Gross weight / Net weight	285kg/250kg

PARAMETER

BD-11

RIVETING MACHINE/EYELETTING MACHINE
| 铆钉机、钉眼机 |



用途USE

该机适用于皮鞋中底、皮件、文件夹或其它物品上钉铆空心铆钉及鞋眼。进行部分更换可具备装钉铆钉和鞋眼两种功能。
The machine adapts to riveting hollow rivet and eyelets in the insole of leather shoes, leathers, paper files or other goods.
It has the functions of riveting or eyeletting by changing some parts.

特点

- 中底铆钉机：适用于钉铆中底、纸盒、皮革等。
- 钉鞋眼机：适用于纸袋、礼品盒、标牌、已冲孔的腰带、皮件等钉眼。
- 操作简单，性能可靠。
- 效率为手工无法比拟。

CHARACTERS

- Insole riveting machine: adapt to riveting insole, box and leather and etc.
- Eyeletting machine: adapt to eyeletting in the paper bag, present box, label, punched belt and leather products.
- Easy operation and reliable performance.
- Efficiency for manual can not match.

技术参数

PARAMETER

型 号	BD-11	Model	BD-11
电机功率	0.55千瓦	Power of motor	0.55Kw
包装尺寸	770×620×1580毫米	Package size	770×620×1580mm
毛重/净重	140公斤/110公斤	Gross weight / Net weight	140kg/110kg

BD-108

AUTOMATIC DOUBLE-SIDE EYELETTING MACHINE
| 双面（和合）鞋眼机 |



用途USE

该机适用于已冲孔的皮鞋帮面、布胶鞋、皮件、服装、纸盒等双面和合鞋眼铆合。
The machine adapts to riveting the double-side eyelets in punched upper of leather shoes, canvas rubber shoes, leathers, clothing and box.

特点

- 该机设计合理，定位准确，铆合鞋眼细致工整、不变型。
- 性能可靠，保证了产品的铆合质量。
- 生手易于学会操作。
- 效率为手操作4~8的工作量。

CHARACTERS

- The machine has reasonable design and exact positioning, the riveting of eyelets is neat and can not be out of shape.
- The reliable performance ensures the riveting quality of products.
- Beginner can master it easily.
- The efficiency is 4-8 times of manual operation.

技术参数

PARAMETER

型 号	BD-108	Model	BD-108
电机功率	0.37千瓦	Power of motor	0.37kW
包装尺寸	700×670×1555毫米	Package size	700×670×1555mm
毛重/净重	217公斤/182公斤	Gross weight / Net weight	217kg/182kg

BD-17

FASTENER RIVETING MACHINE

纽扣铆合机



用途USE

BD-17型铆合机是一种用于空心铆钉，钻石铆钉，纽扣类的自动铆合设备，它适用于皮鞋、皮包、服装、腰带、工艺品等。
BD-17 type riveting machine is an automatic riveting equipment for hollow rivet, diamond rivet, fastener rivet. It adapts to leather shoes, leather bag, clothes, belt, handicrafts, and etc.

特点

- 采用转盘分料，流道输送自动给料方式。
- 夹合铆钉铆合结构，使铆钉更加端正一致。
- 设有激光定位装置，使铆合位置更加准备。
- 对薄形材料无需冲孔，可直接钉铆。
- 该机结构简单，操作方便。

CHARACTERS

- Adopt the way of dividing material by rotating plate, delivering from flowing channel and feeding automatically.
- The riveting structure of clipping rivet makes the rivet more correctly.
- Equips with laser positioning device, and makes the position of riveting more accurately.
- No need punching holes to thin material and can riveting directly.
- The structure of machine is simple and the operation is easy.

技术参数

PARAMETER

型 号	BD-17	Model	BD-17
电 源	380伏 50赫兹	Power	380V 50Hz
工作功率	0.37千瓦	Work power	0.37kW
主轴转速	200转/分	Rotate Speed of Main Shaft	200rpm/min
包装尺寸	790×550×1550毫米	Package size	790×550×1550mm
毛重/净重	140公斤/110公斤	Gross weight / Net weight	140kg/110kg

BD-107

DOUBLE-SIDE RIVETING MACHINE

双面铆钉铆合机



用途USE

该机适用于鞋类、箱包、服装、腰带及工艺品类等铆钉铆合，具有激光照点定位。
The machine adapts to riveting various kind of rivets in shoes, luggage , clothing, belt, handicraft, etc.. It has the advantage of location by laser positioning.

特点

- 该机结构简单，操作方便。
- 对薄形材料无需冲孔，可直接钉铆。
- 设有激光定位装置，使铆合位置更加准备。
- 采用转盘分料，流道输送自动给料方式。
- 夹合铆钉铆合结构，使铆钉更加端正一致。

CHARACTERS

- The structure of machine is simple and the operation is easy.
- No need punching holes to thin material and can riveting directly.
- Equips with laser positioning device, and makes the position of riveting more accurate.
- Adopt the way of dividing material by rotating plate, delivering from flowing channel and feeding automatically.
- The riveting structure of clipping rivet makes the rivet more correctly.

技术参数

PARAMETER

型 号	BD-107	Model	BD-107
钉眼次数	140次/分	Nailing speed	140times/min
钉眼规格	Φ3-Φ7毫米	Spacing adjustment	Φ3-Φ7mm
电机功率	0.37千瓦	Power of motor	0.37kW
包装尺寸	700×670×1555毫米	Package size	700×670×1555mm
毛重/净重	217公斤/182公斤	Gross weight / Net weight	217kg/182kg

BD-11B

SEMI-AUTOMATIC (MULTI-FUNCTION) BUTTON RIVETING MACHINE
半自动（多用型）钉扣机



用途 USE

该机适用于登山扣、虎骨扣、馒头扣等扣眼的铆合。
This machine is adapts to riveting d-ring button, hook button, bun-like button and etc.

特点

- 操作简单，性能可靠。
- 工作效率高且定位准确。
- 通过更换模具，该机可适用多种扣眼。

CHARACTERS

- Easy operation and reliable performance.
- High production efficiency and Accurate positioning.
- Change the model for eyelet ,many kinds of eyelets can be nailed by this machine.

技术参数

PARAMETER

型 号	BD-11B	Model	BD-11B
电机功率	0.55千瓦	Power of motor	0.55kW
电源电压	220伏/380伏 50-60赫兹	Power	220V/380V 50-60Hz
包装尺寸	770×620×1580毫米	Package size	770×620×1580mm
毛重/净重	140公斤/110公斤	Gross weight / Net weight	140kg/110kg

BD-18

TABLE TYPE RIVETING MACHINE
桌上型铆钉机



用途 USE

该机适用于皮鞋中底插中纸板与腰铁铆合及皮件、文件包装盒等铆钉铆合设备。
The machine adapts to riveting insole shank board and iron sheet of leather shoes, leather and file packing box.

技术参数

PARAMETER

型 号	BD-18	Model	BD-18
电机功率	0.37千瓦	Power of motor	0.37kW
钉打次数	195次/分	Nailing speed	195times/min
包装尺寸	1050×600×1260毫米	Exterior size	1050×600×1260mm
毛重/净重	128公斤/98公斤	Gross weight / Net weight	128kg/98kg

BD-30

AUTOMATIC PUNCHING MACHINE

| 自动冲孔机 |



用途USE

该机适用于旅游鞋、皮鞋、腰带、皮件等冲孔，代替手工作业，具有易操作、方便、轻松、效率高等优点。
The machine adapts to punching holes in the sneakers, leather shoes, belt and leather, instead of manual work it has advantages of easy operation, convenience, relaxation, high efficiency and etc.

JD-10

COMPUTER DIRECT-DRIVEN BUTTON RIVETING MACHINE

| 电脑直驱打钮机 |



用途USE

本机适合所有服装、箱包、手袋、皮具、皮带、户外用品、鞋类及工艺品等行业的所有钮扣铆合。
This machine is suitable for all buttons riveting work for clothing, bags, handbags, leather goods, belts, outdoor products, shoes and handicrafts and other industries.

特点

- 节能 本机采用节能永磁电机驱动，不工作电机不启动。
- 安全 本机设有机械防打手装置，避免误操作带来的伤手。
- 通用 本机适用于市场上99%的打钮模具。
- 智能 本机采用智能调模，便于厚料薄料的切换。

CHARACTERS

- Energy Conservation: The machine adopts energy-saving permanent magnet motor drive, no work motor does not start.
- Safety: The machine is equipped with mechanical thugs prevention device, to avoid hand injured by wrong operation.
- Universal: The machine is suitable for 99% of button moulds in the market.
- Intelligence: The machine adopts intelligent mould adjustment, facilitate thick and thin material switch.

技术参数

PARAMETER

型 号	BD-30	Model	BD-30
冲孔速度	220个/分	Nailing speed	220times/min
冲孔规格	Φ2-Φ8毫米	Spacing adjustment	Φ2-Φ8mm
鞋眼孔距	12-30毫米	Nailing size	12-30mm
电机功率	0.55千瓦	Power of motor	0.55kW
包装尺寸	950×650×1720毫米	Package size	950×650×1720mm
毛重/净重	195公斤/165公斤	Gross weight / Net weight	195kg/165kg

技术参数

PARAMETER

型 号	JD-10	Model	JD-10
电 源	220伏 50赫兹	Voltage	220V 50Hz
功 率	0.55千瓦	Power	0.55kW
加工速度	120次/分	Working speed	120beats/minute
包装尺寸	625×495×1300毫米	Package size	625×495×1300mm
毛重/净重	50公斤/30公斤	Gross weight / Net weight	50kg/30kg

JD-907

AUTOMATIC HOOK BUTTON FASTENING MACHINE

| 自动钉虎钩扣机 |



用途 USE

用于时尚女鞋、劳保鞋、登山鞋、运动鞋、休闲鞋上的虎钩扣钉铆。
It is used for button fastening on fashion women shoes, safety shoes, mountaineering shoes, sports shoes and leisure shoes etc.

特点

- 系统控制主电机钉铆时的运转过程，使不操作时自动停止（907A）。
- 采用电子感应器控制虎钩扣自动送料，料满自动停止。
- 配有手指安全保护装置，操作时安全放心。
- 对物料铆合位置有激光亮点对照定位，准确方便。
- 每小时钉扣2500次，生产效率高。

CHARACTERS

- The system controls the operation process of button fastening carried out by the main motor, which will automatically stops when the operation is stopped.(907A)
- The electronic sensor is adopted to control the automatic feeding of buttons, which will stop automatically until the feeding is completed.
- It is provided with finger safety protection device, which makes the operation safe.
- The fastening position of materials is provided with laser bright spot contrast localization, which is accurate and convenient.
- High production efficiency with button fastening of 2500 times per hour.

技术参数

型 号	JD-907	Model	JD-907
电 源	380伏 50赫兹	Power	380V 50Hz
电机功率	0.37千瓦	Motor power	0.37kW
电机转速	900转/分	Motor rotation speed	900rpm/min
物料厚度	4毫米	Material thickness	4mm
包装尺寸	1280x970x1610毫米	Package size	1280x970x1610mm
毛重/净重	235公斤/182公斤	Gross weight / Net weight	235kg/182kg

JD-917

AUTOMATIC HOOK BUTTON FASTENING MACHINE

| 自动钉虎钩扣机 |



专利产品

用途 USE

用于时尚女鞋、劳保鞋、登山鞋、运动鞋、休闲鞋上的虎钩扣钉铆。
It is used for button fastening on fashion women shoes, safety shoes, mountaineering shoes, sports shoes and leisure shoes etc.

特点

- 系统控制主电机钉铆时的运转过程，使不操作时自动停止（907A）。
- 采用电子感应器控制虎钩扣自动送料，料满自动停止。
- 配有手指安全保护装置，操作时安全放心。
- 对物料铆合位置有激光亮点对照定位，准确方便。
- 每小时钉扣2500次，生产效率高。

CHARACTERS

- The system controls the operation process of button fastening carried out by the main motor, which will automatically stops when the operation is stopped. (907A)
- The electronic sensor is adopted to control the automatic feeding of buttons, which will stop automatically until the feeding is completed.
- It is provided with finger safety protection device, which makes the operation safe.
- The fastening position of materials is provided with laser bright spot contrast localization, which is accurate and convenient.
- High production efficiency with button fastening of 2500 times per hour.

技术参数

型 号	JD-917	Model	JD-917
电 源	380伏 50赫兹	Power	380V 50Hz
电机功率	0.37千瓦	Motor power	0.37kW
电机转速	900转/分	Motor rotation speed	900rpm/min
物料厚度	4毫米	Material thickness	4mm
包装尺寸	1280x970x1610毫米	Package size	1280x970x1610mm
毛重/净重	245公斤/192公斤	Gross weight / Net weight	245kg/192kg

JD-908

AUTOMATIC MOUNTAINEERING BUTTON FASTENING MACHINE

| 自动登山扣机 |



用途 USE

用于劳保鞋、登山鞋、运动鞋、休闲鞋上的登山扣钉铆。
It is used for mountaineering button fastening on safety shoes, mountaineering shoes, sports shoes and leisure shoes etc.

特点

- 系统控制主电机钉铆时的运转过程，使不操作时自动停止（908A）。
- 电子振动机构自动送料，使登山扣无损送入钉铆。
- 配有手指安全保护装置，操作时安全放心。
- 对物料铆合位置有激光亮点对照定位，准确方便。
- 每小时钉扣2500次，生产效率高。

CHARACTERS

- The system controls the operation process of button fastening carried out by the main motor, which will automatically stops when the operation is stopped(908A).
- The electronic vibration mechanism will carry out automatic feeding for button fastening without any damage to the mountaineering buttons.
- It is provided with finger safety protection device, which makes the operation safe.
- The fastening position of materials is provided with laser bright spot contrast localization, which is accurate and convenient.
- High production efficiency with button fastening of 2500 times per hour.

技术参数

型 号	JD-908	Model	JD-908
电 源	380伏 50赫兹	Power	380V 50Hz
电机功率	0.37千瓦	Motor power	0.37kW
电机转速	900转/分	Motor rotation speed	900rpm/min
物料厚度	4毫米	Material thickness	4mm
包装尺寸	1280x970x1610毫米	Package size	1280x970x1610mm
毛重/净重	235公斤/182公斤	Gross weight / Net weight	235kg/182kg

JD-918

AUTOMATIC MOUNTAINEERING BUTTON FASTENING MACHINE

| 自动登山扣机 |



专利产品

用途 USE

用于劳保鞋、登山鞋、运动鞋、休闲鞋上的登山扣钉铆。
It is used for mountaineering button fastening on safety shoes, mountaineering shoes, sports shoes and leisure shoes etc.

特点

- 系统控制主电机钉铆时的运转过程，使不操作时自动停止（908A）。
- 电子振动机构自动送料，使登山扣无损送入钉铆。
- 下扣垫片自动送料。
- 配有手指安全保护装置，操作时安全放心。
- 对物料铆合位置有激光亮点对照定位，准确方便。
- 每小时钉扣2500次，生产效率高。

CHARACTERS

- The system controls the operation process of button fastening carried out by the main motor, which will automatically stops when the operation is stopped(908A).
- The electronic vibration mechanism will carry out automatic feeding for button fastening without any damage to the mountaineering buttons.
- It is provided with finger safety protection device, which makes the operation safe.
- The fastening position of materials is provided with laser bright spot contrast localization, which is accurate and convenient.
- High production efficiency with button fastening of 2500 times per hour.

技术参数

型 号	JD-918	Model	JD-918
电 源	380伏 50赫兹	Power	380V 50Hz
电机功率	0.37千瓦	Motor power	0.37kW
电机转速	900转/分	Motor rotation speed	900rpm/min
物料厚度	4毫米	Material thickness	4mm
包装尺寸	1280x970x1610毫米	Exterior size	1280x970x1610mm
毛重/净重	245公斤/192公斤	Gross weight / Net weight	245kg/192kg

BD-100

TWIN-HEAD EYELETTING MACHINE

| 双头钉眼机 |



用途 USE

该机适用于对纸袋、大型包装塑料盒、礼品盒、皮鞋中底腰铁及代表证等钉鞋眼。

The machine adapts to eyeletting on the paper bag, large wrapping plastic box, gift box, file packing box, iron sheet of leather shoes insole and representative certificate.



特点

具备二个工作头，在工作物的相对称的位置同时装钉两个鞋眼。

- 自动送鞋眼功能。
- 定位穿孔准确，钉眼效果好。
- 两头间距大小可进行调整，双头同时装钉，大大提高工作效率。
- 操作简单，性能可靠。

CHARACTERS

Equip with two heads, and it can rivet two eyelets on the symmetrical position of the workpiece at the same time.

- The function of automatic feeding shoes eyes.
- Positioning and punching are exact and the eyeleting effect is excellent.
- The space between the two heads can be adjusted, and the double heads can bind synchronously, which enhance the work efficiency.
- Easy operation and reliable performance.

技术参数

型 号	BD-100	Model	BD-100
两头间距	60-120毫米（小）120-220毫米（大）	Spacing adjustment	60-120mm（S）120-220mm（B）
电机功率	0.37千瓦	Power of motor	0.37kW
包装尺寸	800×7000×1550毫米	Package size	800×7000×1550mm
毛重/净重	200公斤/160公斤	Gross weight / Net weight	200kg/160kg

JD-136C

AUTOMATIC PEARL & NAIL RIVETING MACHINE

| 全自动钉珠机 |



用途 USE

本机用于Φ4-Φ12mm圆形珍珠和四爪钉的铆合，主要适用于纺织服装、皮鞋皮具、箱包、饰品等行业的装饰加工。

This machine is used for riveting work of Φ4-Φ12mm round pearl and four-claw nail, mainly is suitable for the textile & garment, leather shoes & leather goods, bags, jewelry industries' decorative processing.



特点

- 高效，本机铆合速度每分钟220-300次，是人工的8-10倍。
- 稳定，科学、创新的设计，严格的加工工艺，铆合成功率99.7%。
- 方便，各种规格珍珠任意更换模具，快捷简单。
- 精准，红外定位装置，且可根据加工产品厚度随意调节，让铆合更精确。
- 人性化、独立的顶料装置，快速排除不良底钉卡滞现象。
- 计数功能，准确记录工人效率，便于统计。

技术参数

型 号	JD-136C	Model	JD-136C
电 源	220伏 50赫兹	Voltage	220V 50Hz
功 率	0.26千瓦	Power	0.26kW
爪钉规格	Φ2.3×3.3毫米	Sizes of four-claw nail	Φ2.3×3.3mm
气源压力	0.4-0.6兆帕	Air pressure	0.4-0.6MPa
包装尺寸	990×730×1500毫米	Package size	990×730×1500mm
毛重/净重	141公斤/101公斤	Gross weight / Net weight	141kg/101kg

CHARACTERS

- High efficiency, the machine riveting speed is 220-300 times per minute, 8 to 10 times the efficiency of manual work.
- Stable, scientific, innovative design, strict processing technology riveting success rate by 99.7%.
- Replace die set quickly and conveniently for different sizes of pearls.
- Infrared positioning counterpoint, accurate and reliable, simple operation, also can be adjusted freely by the thickness of processing product.
- Humanized and independent nail ejecting device, quickly solve the bad four-claw nail's stuck phenomenon.
- Counting function, accurately record the workers' efficiency, easy to statistics.

PARAMETER

JD-136D

AUTOMATIC DOUBLE-COLOUR PEARL & NAIL RIVETING MACHINE

| 全自动双色钉珠机 |



用途 USE

本机用于 $\Phi 4-\Phi 12$ mm圆形珍珠和四爪钉的铆合，主要适用于纺织服装、皮鞋皮具、箱包、饰品等行业的装饰图案加工，可同时加工两种颜色且大小不同的珍珠，排列顺序由电脑设定，图案美观、新颖。

This machine is used for riveting work of $\Phi 4-\Phi 12$ mm round pearl and four-claw nail, mainly is suitable for the textile & garment, leather shoes & leather goods, bags, jewelry industries' decorative pattern processing, can rivet simultaneously two colours and different sizes of pearls, the order is setted by the computer, pattern is beautiful and novel.

特点

- 高效，本机单头铆合速度每分钟220-300次，双头切换铆合速度每分钟160-220次，是人工的8-10倍。
- 稳定，科学、创新的设计，严格的加工工艺，铆合成功率99.7%。
- 方便，各种颜色规格珍珠任意切换，快捷简单。
- 精准，红外定位装置，产品加工厚度可随意调节，让铆合更精确。
- 人性化、独立的顶料装置，快速排除不良底钉卡滞现象。
- 计数功能，准确记录工人效率，便于统计。

技术参数

型 号	JD-136D	Model	JD-136D
电 源	220伏 50赫兹	Voltage	220V 50Hz
功 率	0.26千瓦	Power	0.26kW
爪钉规格	$\Phi 2.3 \times 3.3$ 毫米	Sizes of four-claw nail	$\Phi 2.3 \times 3.3$ mm
包装尺寸	990×730×1500毫米	Package size	990×730×1500mm
毛重/净重	148公斤/103公斤	Gross weight / Net weight	148kg/103kg

CHARACTERS

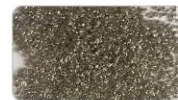
- High efficiency, the machine single-head riveting speed is 220-300 times per minute, double-head switch riveting speed is 160-220 times per minute, 8 to 10 times the efficiency of manual work.
- Stable, scientific, innovative design, strict processing technology riveting success rate by 99.7%.
- Replace die set quickly and conveniently for different sizes and different colours of pearls.
- Infrared positioning counterpoint, accurate and reliable, simple operation, also can be adjusted freely by the thickness of processing product.
- Humanized and independent nail ejecting device, quickly solve the bad four-claw nail's stuck phenomenon.

PARAMETER

JD-136S

AUTOMATIC MULTI-FUNCTION PEARL & NAIL RIVETING MACHINE

| 全自动多功能钉珠机 |



用途 USE

本机用于 $\Phi 4-\Phi 12$ mm圆形珍珠、 $\Phi 6-\Phi 12$ mm半圆、锥形、圆台形及方形装饰材料 and 四爪钉的铆合，主要适用于纺织服装、皮鞋皮具、箱包、饰品等行业的装饰图案加工。

This machine is used for riveting work of $\Phi 4-\Phi 12$ mm round pearl, $\Phi 6-\Phi 12$ mm half round / cone / truncated cone / square shaped pearl and four-claw nail, mainly is suitable for the textile & garment, leather shoes & leather goods, bags, jewelry industries' decorative pattern processing.

特点

- 高效，本机圆珠铆合速度每分钟220-300次，异形珠铆合速度每分钟160-220次，是人工的8-10倍。
- 稳定，科学、创新的设计，严格的加工工艺，铆合成功率99.7%。
- 方便，圆形、半圆形、锥形、圆台形及方形装饰材料任意更换模具，快捷简单，无需更换轨道及振动盘。
- 精准，红外定位装置，产品加工厚度可随意调节，让铆合更精确。
- 人性化、独立的顶料装置，快速排除不良底钉卡滞现象。

技术参数

型 号	JD-136S	Model	JD-136S
电 源	220伏 50赫兹	Voltage	220V 50Hz
功 率	0.41千瓦	Power	0.41kW
爪钉规格	$\Phi 2.3 \times 3.3$ 毫米	Sizes of four-claw nail	$\Phi 2.3 \times 3.3$ mm
包装尺寸	990×730×1500毫米	Package size	990×730×1500mm
毛重/净重	180公斤/136公斤	Gross weight / Net weight	180kg/136kg

CHARACTERS

- High efficiency, the machine single-head riveting speed is 220-300 times per minute, double-head switch riveting speed is 160-220 times per minute, 8 to 10 times the efficiency of manual work.
- Stable, scientific, innovative design, strict processing technology riveting success rate by 99.7%.
- Replace die set quickly and conveniently for different sizes and different colours of pearls.
- Infrared positioning counterpoint, accurate and reliable, simple operation, also can be adjusted freely by the thickness of processing product.
- Humanized and independent nail ejecting device, quickly solve the bad four-claw nail's stuck phenomenon.

PARAMETER

JD-501S/X

AUTOMATIC FIVE-CLAW NAIL RIVETING MACHINE

五爪扣自动铆合机



专利产品

用途 USE

该机主要适用于服装的五爪扣铆合工作，可对厚度1.5mm 以下的布料、天然皮、PVC、PU等材料进行五爪扣的钉铆，是五爪扣铆合作业的首选设备。

The machine adapts to riveting five-claws nail to clothing, it can rivet five-claw nails in the material of cloth, natural leather, PVC, PU and etc, which the thickness is less than 1.5mm, it's the first choice of five-claw nail riveting work.

特点

该机采用全机械连杆结构，结构简单，易于调试与维修，且性能安全可靠，工作效率是手工操作的8-15倍。

- 该机采用单打离合器设计，确保不易出现二次重钉现象。
- 上下片自动送扣，送扣率每分钟可达80个，确保高效率工作。
- 设有激光定位灯，红点定位，准确方便。
- 铆合后的五爪扣牢固、工整、美观、不变形。
- 更换配件，适用于四合扣、衣角钉、撞钉等。

CHARACTERS

The machine adopts all mechanical connecting rod structure. The structure is simple, the machine is easy to adjust and repair, the performance is safe and reliable, the efficiency is 8-15 times of manual operation.

- The machine adopts the singles clutch design and ensures that it won't occur the phenomenon of two rivets one time.
- Automatic feeding of upper spacer and lower spacer, and the speed of feeling can reach to 80 pieces per minute which ensure high work efficiency.
- Equip with laser light for positioning which ensure accuracy and convenience.
- The five-claws nail after riveting is firm, neat, beautiful and ametabolic.

技术参数

型 号	JD-501S/X	Model	JD-501S/X
电 源	220伏 50赫兹	Power	220V 50Hz
电机功率	0.37千瓦	Power of motor	0.37kW
包装尺寸	550 × 500 × 1300毫米	Package size	550 × 500 × 1300mm
毛重/净重	170公斤/126公斤	Gross weight / Net weight	170kg/126kg

PARAMETER

BD-102A

POUNDING MACHINE

鞋口/帮面锤平机



用途 USE

该机适用于对鞋帮面、鞋后跟凹凸不平、接缝、折边处太厚进行整平处理。采用锤打法平整绷帮或缝沿条后帮脚的设备。

The machine adapts to pounding shoes heel which is rough and uneven in surface and the places of folding & joint where are too thick.

特点

- 具有锤打和电热熨平功能。
- 锤打后的鞋口、帮面的折边或接头平整美观。
- 工作效率高、性能优异。
- 速度快、噪声低。
- 操作简单、安全可靠。

CHARACTERS

- It has the functions of pounding and electrothermal ironing.
- After pounding, the topline and the upper of folding or joint are neat and beautiful.
- High efficiency and excellent performance.
- High speed and low noise
- The operation is easy and safe.

技术参数

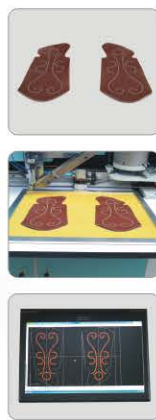
型 号	BD-102A	Model	BD-102A
锤打频率	2800次/分钟	Frequency of pounding	2800times/min
电 热	100瓦	Electric Heat	100W
电机功率	0.37千瓦	Power of motor	0.37kW
包装尺寸	850 × 500 × 1440毫米	Package size	850 × 500 × 1440mm
毛重/净重	145公斤/108公斤	Gross weight / Net weight	145kg/108kg

PARAMETER

JD-834C

COMPUTERIZED AUTO-NAILING MACHINE

电脑全自动钉扣机



用途USE

该机主要用于服装、皮鞋、皮包、工艺品等方形、圆形、圆锥形等四爪扣的钉铆工作。
This machine is used for riveting the square/round/cone/truncated cone shaped four-claw button in clothes, leather shoes, leather bags and craft decorations.

特点

- 配带软件，可制作各种花样。
- 选择所需花样，电脑全自动钉扣。
- 震动盘自动翻扣，扣子进入流道的机率高，适合大批量生产。
- 震动盘可以对不同型号的扣子进行翻扣，应用范围广。
- 有激光对准装置，容易找正钉铆位置，钉铆牢固。
- 操作简单易学，使用安全，调节容易。

技术参数

型 号	JD-834C	Model	JD-834C
电 源	220伏 50赫兹	Power	220V 50Hz
总 功 率	1.1千瓦	Total power	1.1kW
工作气压	0.6兆帕	Air Pressure	0.6MPa
钉铆物料厚度	0.3-2毫米	Thickness of the material to be riveted	0.3-2mm
包装尺寸	1500×1220×1580毫米	Package size	1500×1220×1580mm
毛重/净重	320公斤/257公斤	Gross weight / Net weight	320kg/257kg

CHARACTERS

- Equipped with software, various patterns can be made.
- Select the desired pattern, computerized full-auto buckle riveting.
- Buckles can be turned over automatically on the shocking disk, leaving a high probability for the buckle to enter the runner, applicable for mass production.
- The shocking disk can make buckles of different models turned over, a wide range of application.
- Available with a laser aiming device, easy to aim at the position to be riveted and resulting in a secure riveting.
- Easy operable, safe use and convenient adjustment.

PARAMETER

BD-316B

DOUBLE-STATION INSOLE MOULDING MACHINE

双工位中底成型机



用途USE

该机是将模具内平面状的中底压制成具有鞋底曲面形状的中底压合成型设备。
The machine can press the flat insole in the die to fit the curved surface shape of shoe last.

特点

- 采用双工位，双联油缸，快速增压，压力大，中底定型效果佳。
- 电气定时，使定型过程自动化，定型时间准确。
- 可加工任意不同型号的中底，上、下模校正容易。
- 外形美观，操作简单，安全可靠。

技术参数

型 号	BD-316B	Model	BD-316B
电机总功率	2.2千瓦	Power of motor	2.2kW
压 力	0-25吨	The pressure	0-25ton
包装尺寸	1160×600×1700毫米	Package size	1160×600×1700mm
毛重/净重	520公斤/480公斤	Gross weight / Net weight	520kg/480kg

CHARACTERS

- Adopt double-seat and double oil cylinder to quickly strengthen the pressure, the forming effect of the insole will be excellent under high pressure.
- Electric timing automatizes the forming process, and the forming time is very excellent under high pressure.
- Various models of insole can be processed and the adjustment of the upper and lower die is easy.
- The appearance is beautiful and the operation is easy and safe.

PARAMETER

BD-316C

BIG POWER DOUBLE-STATION INSOLE MOULDING MACHINE

加厚型大压力双工位中底成型机



用途USE

该机是将模具内平面状的中底压制成具有檀底曲面形状的中底压成型设备。
The machine can press the flat insole in the die to fit the curved surface shape of shoe last.

特点

- 更大压力，更稳定的性能。
- 采用双工位，双联油缸，快速增压，压力大，中底定型效果佳。
- 电气定时，使定型过程自动化，定型时间准确。
- 可加工任意不同型号的中底，上、下模校正容易。

CHARACTERS

- Bigger power, more stable performance.
- Adopt double-seat and double oil cylinders to quickly strengthen the pressure, the forming effect of the insole will be excellent under high pressure.
- Electric timing automatizes the forming process, and the forming time is very exact.
- Various models of insoles can be processed and the adjustment of the upper and lower die is easy.

技术参数

型 号	BD-316C	Model	BD-316C
电机功率	3千瓦	Power of motor	3kW
压 力	0-40吨	The pressure	0-40ton
包装尺寸	800×1280×1700毫米	Package size	800×1280×1700mm
毛重/净重	640公斤/600公斤	Gross weight / Net weight	640kg/600kg

BD-316E

BIG POWER DOUBLE-STATION INSOLE MOULDING MACHINE

加厚型大压力双工位中底成型机



用途USE

该机是将模具内平面状中底压制成具有檀底曲面形状的中底的压成型设备。
The machine can press the flat insole in the die to fit the curved surface shape of shoe last.

特点

- 更大压力，更稳定的性能。
- 采用双工位，双联油缸，快速增压，压力大，中底定型效果佳。
- 电气定时，使定型过程自动化，定型时间准确。
- 可加工任意不同型号的中底，上、下模校正容易。
- 具有独立的冷却系统，油温稳定，产品质量有保证。
- 具有定位支架，放置中底更方便快捷，提高工作效率，并保证产品质量。

CHARACTERS

- Bigger power, more stable performance.
- Adopt double-seat and double oil cylinders to quickly strengthen the pressure, the forming effect of the insole will be excellent under high pressure.
- Electric timing automatizes the forming process, and the forming time is very exact.
- Various models of insoles can be processed and the adjustment of the upper and lower die is easy.
- With independent cooling system, the oil temperature is stable, which guarantees product quality.
- With positioning support, place insole more conveniently and quickly, improve work efficiency, ensure the product quality.

技术参数

型 号	BD-316E	Model	BD-316E
电机功率	3千瓦	Power of motor	3kW
压 力	0-65吨	The pressure	0-65ton
包装尺寸	1340×650×1600毫米	Package size	1340×650×1600mm
毛重/净重	820公斤/780公斤	Gross weight / Net weight	820kg/780kg

JD-811

AUTOMATIC INSOLE RIVETING MACHINE

| 全自动中底铆钉机 |



专利产品

用途 USE

该机是制鞋行业中生产中底厂的新一代自动化设备，主要用于制鞋行业中的中底半插与铁芯自动铆合工作，工作效率高，安全性能好。
The machine is great new generation automatic equipment for insole manufacturers in the shoe-making industry, featured by high working efficiency and good safety performance, it is mainly used for automatic riveting operation of insole shank board and iron sheet.

特点

- 采用单片机智能控制全自动铆合工作。
- 整机采用气动设计，能耗低、噪音低。
- 机械手自动送半插与铁芯进行铆合。
- 铁芯、中底两头同时自动钉铆。
- 可自动操作，也可手动操作，成品自动出料。
- 智能报警系统，卡料、无料、故障提醒。

技术参数

型 号	JD-811	Model	JD-811
电 源	220伏 50赫兹	Power	220V 50Hz
总 功 率	0.6千瓦	Total power	0.6kW
工作速度	1500只/小时	Working speed	1500pcs/hr
工作气压	0.5-1.8 兆帕	Working pressure	0.5-1.8 Mpa
适用中底厚度	1.5-3毫米	Applicable insole thickness	1.5-3mm
包装尺寸	1070×900×1610毫米	Package size	1070×900×1610mm
毛重/净重	425公斤/375公斤	Gross weight / Net weight	425kg/375kg

CHARACTERS

- It adopts single-chip intelligent control for automatic riveting operation.
- The whole machine adopts pneumatic design with low energy consumption and low noise.
- The mechanical hand automatically sends the arch and iron core for riveting.
- Simultaneous and automatic riveting of shank board and insole.
- Automatic and manual operations are both available, automatic discharging of finished products.
- Intelligent alarm system: stuck material, no material, failure warning.

PARAMETER

JD-826

AUTOMATIC INSOLE SLOT MILLING MACHINE

| 自动中底铣槽机 |



专利产品

用途 USE

该机是制鞋行业中底的半插铣槽专用设备，在半插与铁芯贴合的位置把半插依据铁芯的要求铣槽，确保半插与铁芯贴合更平整。
The machine is a special device for insole shank board slot milling in the shoe-making industry, it carries out groove milling of the shank board according to the requirement of the iron sheet at the position where the shank board and iron sheet are bonded, ensure the shank board and iron sheet are bonded more flatly.

特点

- 采用电脑芯片自动化控制，使机器工作更加稳定。
- 自动送料、出料机构，使铣槽工作安全高效。
- 高效的自动吸尘机构，保证该机的工作过程无污染环境。
- 可根据不同长度、厚度的中底，调整铣槽的长短、深浅。
- 出料堆放整齐。

技术参数

型 号	JD-826	Model	JD-826
电 源	380伏 50赫兹	Power	380V 50Hz
总 功 率	1.3千瓦	Power of motor	1.3 kW
铣槽长度	175mm	Milling groove length	175mm
气泵工作压力	0.5-1.8 兆帕	Pump working pressure	0.5-1.8 MPa
刀具转速	3400转/分	Cutter rotation speed	3400rpm/min
包装尺寸	850×620×1280毫米	Package size	850×620×1280mm
毛重/净重	300公斤/248公斤	Gross weight / Net weight	300kg/248kg

CHARACTERS

- Computer chip automatic control is adopted to make the machine work more stable.
- Automatic feeding and discharging mechanism makes the groove milling work safe and efficient.
- High-efficiency automatic dust collecting mechanism ensures that there is no pollution to the environment when the machine is operated.
- According to insole of different lengths and thicknesses, the length and depth of the milling groove can be adjusted.
- Discharging insole are stacked neatly.

PARAMETER

JD-313

AUTOMATIC INSOLE TRIMMING MACHINE
| 自动中底修边机 |



用途USE

该机适用于切削中底后跟直边及圆角成一定斜度且切削表面光滑的专用设备。
The machine adapts to trimming the insole heel straighter round edge to pitch then make surface smooth.

特点

- 该机采用大切削刀，高速修削，使中底的切削表面光滑。
- 采用大功率吸尘装置，净化工作环境，无污染。
- 修削角度可任意调节，以达到最终要求。
- 拥有独立的磨刀装置，保证了切削质量始终一致。
- 加工速度可调，无级变速，操作简单易学。

CHARACTERS

- Adopt large trimming knife, high speed cutting, make the insole trimming surface smooth.
- Using high-power suction device, purify the work environment, no pollution.
- Trimming angle can be adjusted to achieve final requirements.
- With independent knife grinding device, ensure the trimming quality consistent.
- Processing speed is adjustable, stepless speed change, the operation is simple to learn.

技术参数

型 号	JD-313	Model	JD-313
电 源	380伏 50赫兹	Power of motor	380V 50Hz
总 功 率	1.6千瓦	Total power	1.6kW
包装尺寸	1200×600×1400毫米	Package size	1200×600×1400mm
毛重/净重	260公斤/220公斤	Gross weight / Net weight	260kg/220kg

BD-312A/B

AUTOMATIC SPEED INSOLE TRIMMING MACHINE
| 自动变速中底修边机 |



专利产品

用途USE

该机适用于切削中底后跟成一定斜度，且切削表面光滑。
The machine adapts to trimming the edge of insole heel to pitch make surface smooth.

特点

- 具有修削中底时直边和圆边自动转换速度功能。
- 方跟和圆跟皆可修削，且修削边缘光滑，细致不变形。
- 单片机装置，自动控制变速，修削速度亦可任意调节速度。
- 独立的吸尘装置，可以完全集中吸除尘屑。
- 设计独特，操作简单、方便。

CHARACTERS

- The machine can change speed automatically when trimming straight edge and round edge of insole.
- Can trim round heel and square heel, the trimmed edge is smooth and neat, and won't out of shape.
- Adopt single chip equipment, it can control speed change automatically, and the trimming speed also can be adjusted freely.
- Freestanding collecting device can absorb the dust completely.
- Special design, simple and convenient operation.

技术参数

型 号	BD-312A/B	Model	BD-312A/B
电 源	380伏 1.1千瓦	Power	380V 1.1Kw
包装尺寸	900×950×1100毫米	Package size	900×950×1100mm
毛重/净重	165公斤/128公斤	Gross weight / Net weight	165kg/128kg

PARAMETER

BD-325
CEMENTING MACHINE
强力胶上糊机



用途 USE

该机适用于对鞋面、包中底鞋材、塑料皮鞋垫、皮革等各种平面软件材质上胶。
The machine adapts to gluing on the flat soft material of upper, shoes material of binding insole, plastic leather insole and leather.

特点

- 强力胶自动循环装置及密封贮胶装置。
- 上胶量可随意调节。
- 采用下置式上胶机构，能保证上胶均匀适中。
- 操作简单，性能可靠。

CHARACTERS

- Automatic cycle device of glue and sealed storage device for glue.
- The quantity of glue can be adjusted freely.
- Adopt the gluing mechanism of lower placement which can ensure the even glue.
- Easy operation and reliable performance.

技术参数

型 号	BD-325	Model	BD-325
电机功率	0.37千瓦	Power of motor	0.37kW
包装尺寸	800×540×420毫米	Package size	800×540×420mm
毛重/净重	65公斤/50公斤	Gross weight / Net weight	65kg/50kg

BD-326
SOFT CYLINDER INSOLE CEMENTING MACHINE
强力胶软轮上糊机



用途 USE

该机用于中底板和插中板涂胶后，任意放入模具内进行压合，使中底自动粘合整齐，粘合后可直接用于中底成型，能取代目前的手工贴合操作。
The machine is used for joint the insole and shank board after gluing, pul the insole and shank board to the mould wilfully, can be jointed neatly and tidily after the jointed can used for moulding directly, which can instead of manual work.

特点

- 强力胶自动循环装置及密封贮胶室、强力胶不易挥发或干涸。
- 上胶量可随意调整，均匀适中，确保粘着力平均。
- 采用下置式上胶软滚轮，确保工作物上胶均匀。
- 操作简单，性能可靠。

CHARACTERS

- Automatic cycle device of glue and sealed storage device for glue, so that the glue can't evaporated easily or dry.
- The quantity of glue can be adjusted freely to ensure the even adhesive force.
- Adopt the soft cylinder gluing of lower placement to ensure the even glue.
- Easy operation and reliable performance.

技术参数

型 号	BD-326	Model	BD-326
电机功率	0.37千瓦	Power of motor	0.37kW
包装尺寸	800×540×420毫米	Package size	800×540×420mm
毛重/净重	85公斤/70公斤	Gross weight / Net weight	85kg/70kg

JD-328B

AUTOMATIC DOUBLE-HEAD INSOLE SKIVING MACHINE

| 自动双头中底削薄机 |



专利产品

用途 USE

该机适用于任意尺码中底插中板的削薄，有利于中底粘贴、压合、成型、提高产品质量。

The machine adapts to skiving any size of insole inserted with shank board, it is good for sticking, pressing, forming of insole and improving the quality of products.

特点

- 该机采用独特直线送料机构，带式压料，高速输送切削，保证送料切削稳定可靠。
- 选用独特合金螺旋刀具，双头切削设计系统，对左右半插板进行分别切削，避免缺边断角。
- 可以左右同时进料中底削薄，大大提高工作效率。
- 双头吸尘机构，使工作环境保持清洁。
- 切削出料口装有带式自动堆叠机构，使物料整理更加方便轻松。

技术参数

型 号	JD-328B	Model	JD-328B
总 功 率	4.6千瓦	Total power	4.2kW
电 源	380伏 50赫兹	Power	380V 50Hz
刀具转速	5100转/分	Cutter rotation speed	5100rpm/min
产 量	19000片/小时	Output	19000pcs/hr
包装尺寸	1530×1100×1080毫米	Package size	1530×1100×1080mm
毛重/净重	400公斤/340公斤	Gross weight / Net weight	400kg/340kg

CHARACTERS

- Adopt the unique straight line feeding mechanism, belt type pressing material, high speed conveying and skiving ,guarantee feeding and skiving stable and reliable.
- Adopt unique alloy spiral knife, double-head skiving design system, respectively skiving left and right shank board, avoid the lack of edge angle.
- Can feed and skive left and right insole at the same time, greatly improve the work efficiency.
- Double dust collecting system, keep working environment clean.
- Skiving discharging exit is equipped with belt type automatic stack, tidy the material more conveniently and easily.

PARAMETER

JD-317A

INSOLE JOINTING MACHINE

| 中底贴合机 |



用途USE

该机用于中底生产过程中的中底板和插中板的贴合，可取代目前的手工贴合操作。

The machine adapts to joining insole board and shank board, instead of manual work.

特点

新发明专利产品，打破目前只能手工操作的落后工艺，解决手工操作的缺点。

- 机械粘合，粘合度更高。
- 大大提高工作效率，工作效率是手工操作无法比拟的。
- 操作简单、易学易会，性能稳定。
- 可压合不同尺寸的中底与插中板。

技术参数

型 号	JD-317A	Model	JD-317A
电机功率	2.2千瓦	Power of motor	2.2kW
电 源	380伏 50赫兹	Power	380V 50Hz
包装尺寸	1200×650×1020毫米	Package size	1200×650×1020mm
毛重/净重	230公斤/190公斤	Gross weight / Net weight	230kg/190kg

CHARACTERS

New invention patented product, break the current can only manual operation of backward technology, solve the disadvantage of manual.

- Mechanical bonding, higher bonding degree.
- Greatly improve the work efficiency, which the manual operation can't match.
- Operation, easy to learn, stable performance.
- Can press and joint insole and the shank board by different sizes.

PARAMETER

BD-340

PRESSING AND JOINTING MACHINE

|压合机|



用途USE

该机用于中底板、插中板等涂胶、粘贴后进行压辊机压合，压合后中底在成型时不易出现挪动移位，使成型后中底边缘美观、整齐。
The machine adapts to pressing the insole and shank board together after gluing and sticking after pressing, the insole does not easily move when forming, then the insole edge will be beautiful, tidy after forming.

特点

- 该机设计合理，操作简单。
- 性能可靠。

CHARACTERS

- The machine has reasonable design, easy operation.
- Have reliable performance.

技术参数

PARAMETER

型 号	BD-340	Model	BD-340
电机功率	0.55千瓦	Power of motor	0.55kW
包装尺寸	830×780×1360毫米	Package size	830×780×1360mm
毛重/净重	110公斤/80公斤	Gross weight / Net weight	110Kg/80Kg